



**MSD Project Clear
University City Storage Facility
City Council Work Session**



September 20, 2017

Agenda

- ④ Welcome
- ④ Introductions & Meeting Format
- ④ Commitment to Reset on Public Input
- ④ Goal of Tonight's Meeting
- ④ How MSD Will Utilize Your Feedback
- ④ Consent Decree
- ④ Project Overview
- ④ Why Here?
- ④ Potential Solution Areas – 5 Areas
- ④ Timeline and Next Steps

Consent Decree

Consent Decree

2012 Consent Decree between MSD, EPA, and Missouri Coalition for the Environment

- 🌿 Primary goal of Consent Decree is to improve water quality and alleviate several wastewater concerns



Consent Decree (continued)

🔹 Major Components:

- Capacity Operation Mgt. & Maintenance (CMOM)
- Sanitary Sewer Overflow (SSO) Master Plan
- Long-Term Control Plan for Combined Sewer Overflows (CSO)

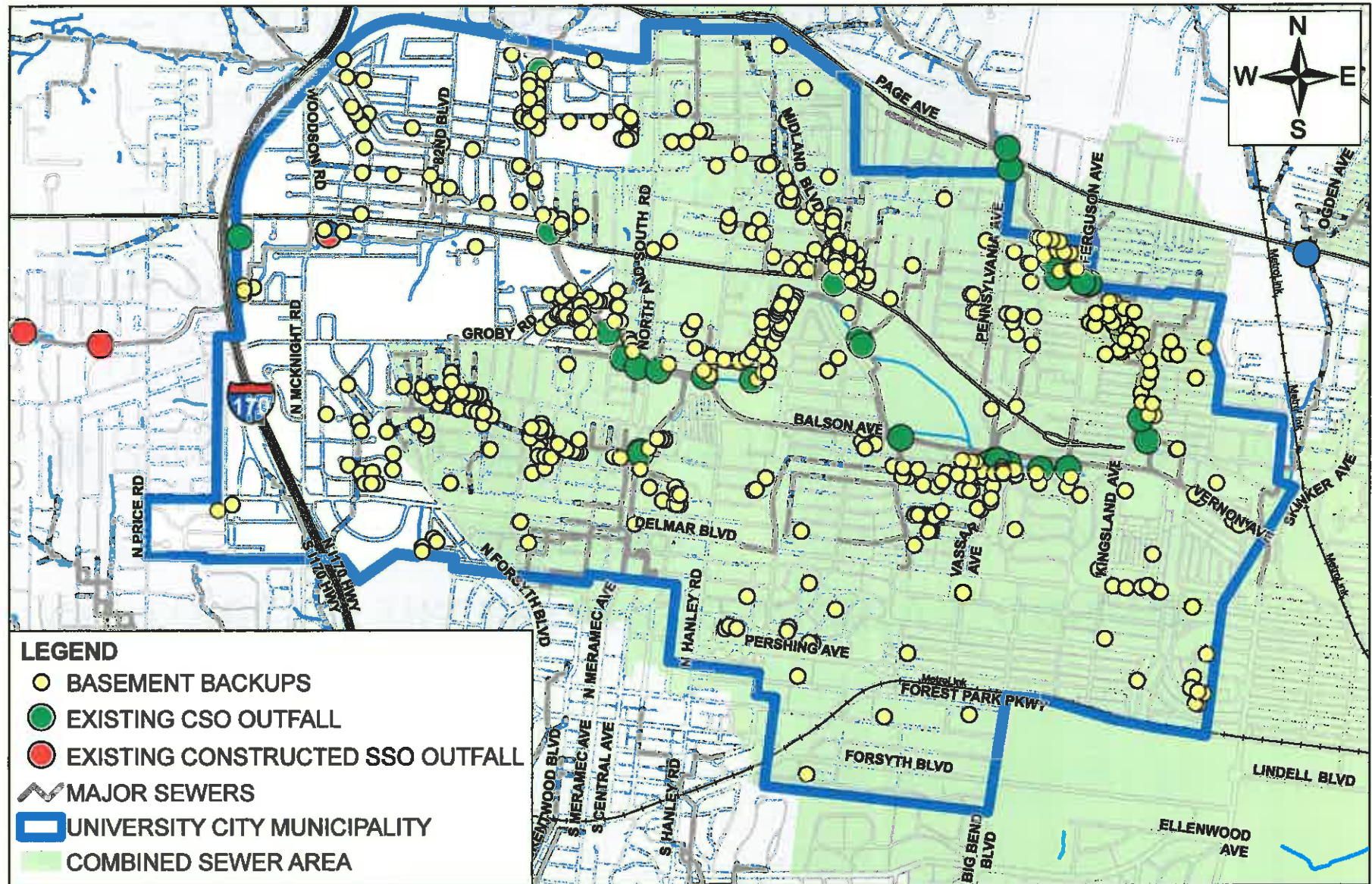
🔹 Contains schedules of numerous projects that are dependent on each other.

🔹 Contains hard schedule for the removal of SSO's.

Project Overview

- ④ Project is necessary to satisfy Consent Decree requirements
- ④ Project is required for future elimination of SSO's.
- ④ In Particular for This Area:
 - Must eliminate Constructed SSO's
 - Must address basement backups
 - Cannot Increase CSO Volume

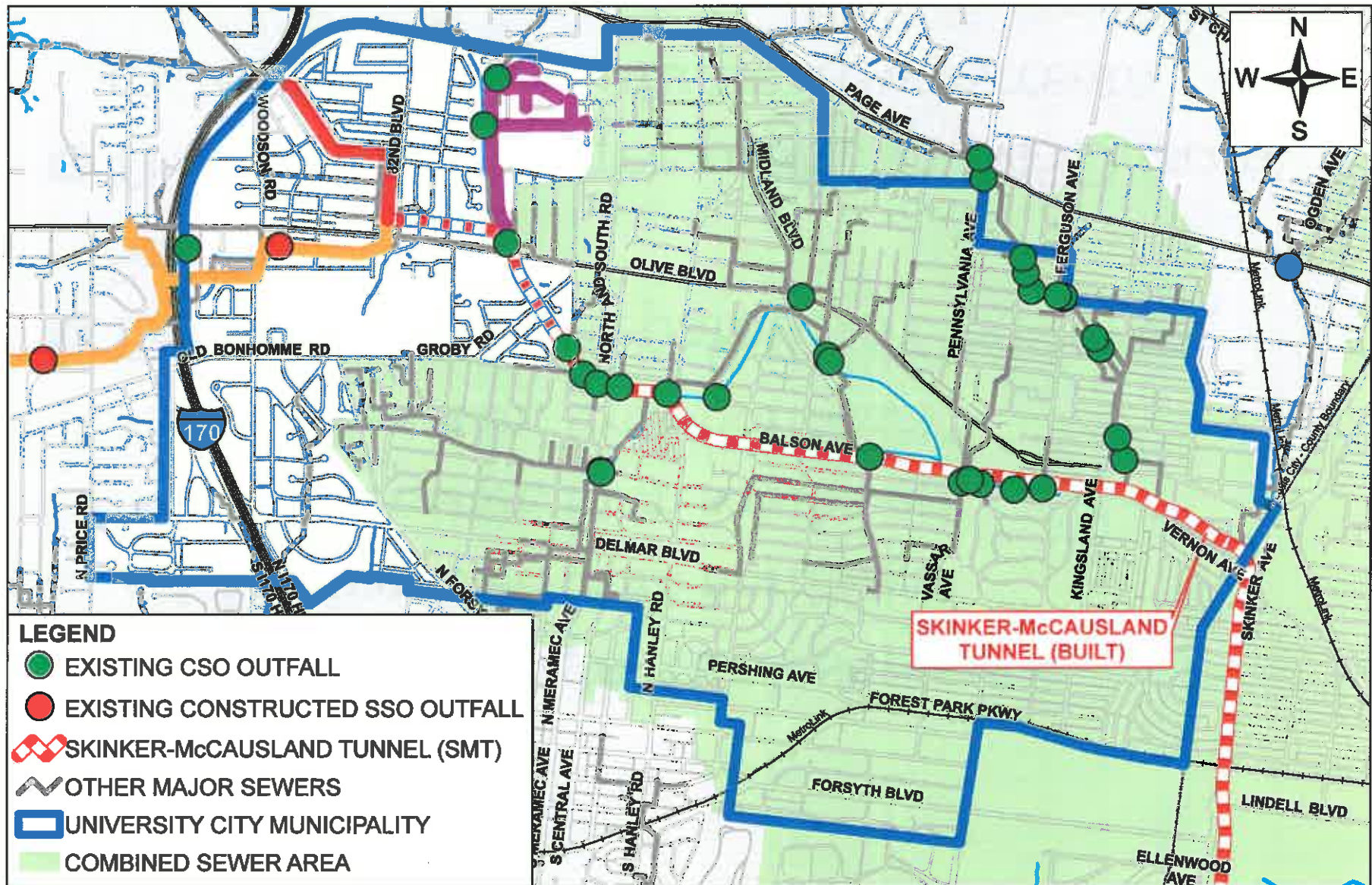
Basement Backups Since 1995 & Sewer Overflow Locations



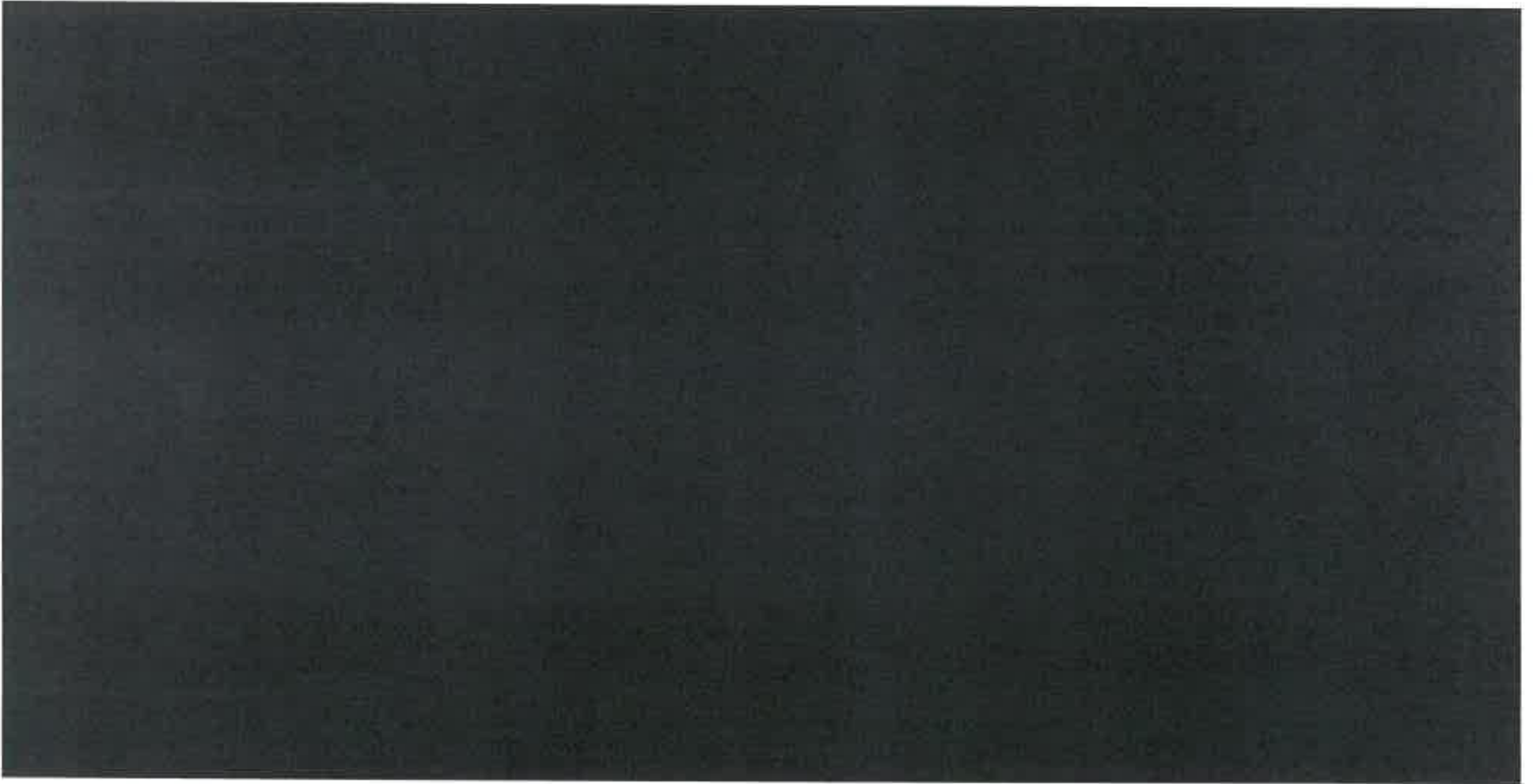
Why Here?

- ④ Junction of 3 large trunk sewers
 - 4.5-ft diameter, from northwest
 - 2.5-ft diameter, from southwest
 - 2.5-ft diameter, from northeast
- ④ Transition from Separate to Combined Sewers
- ④ The Consent Decree prohibits MSD from increasing CSO volume downstream

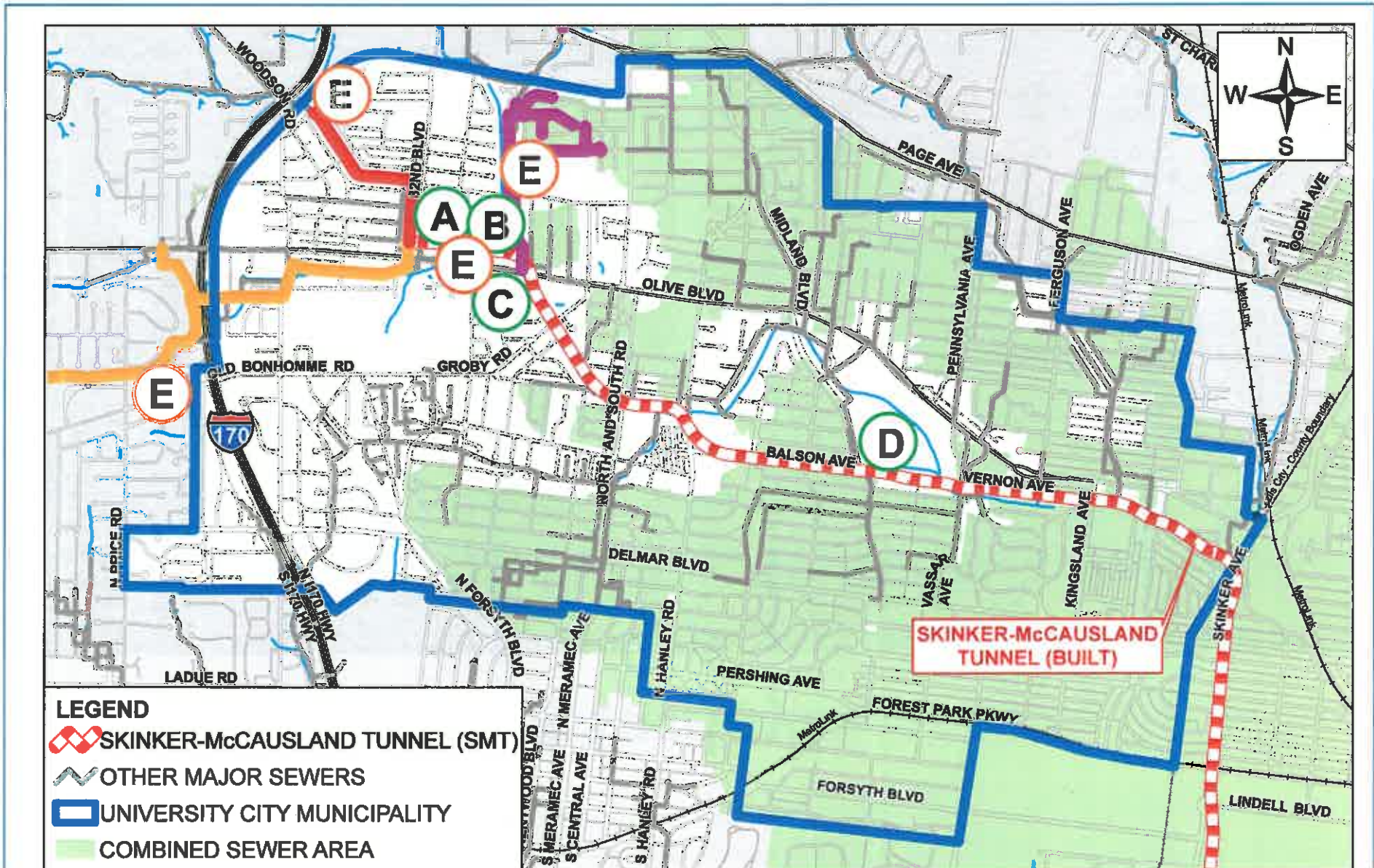
Major Sewer Lines Related to the Project

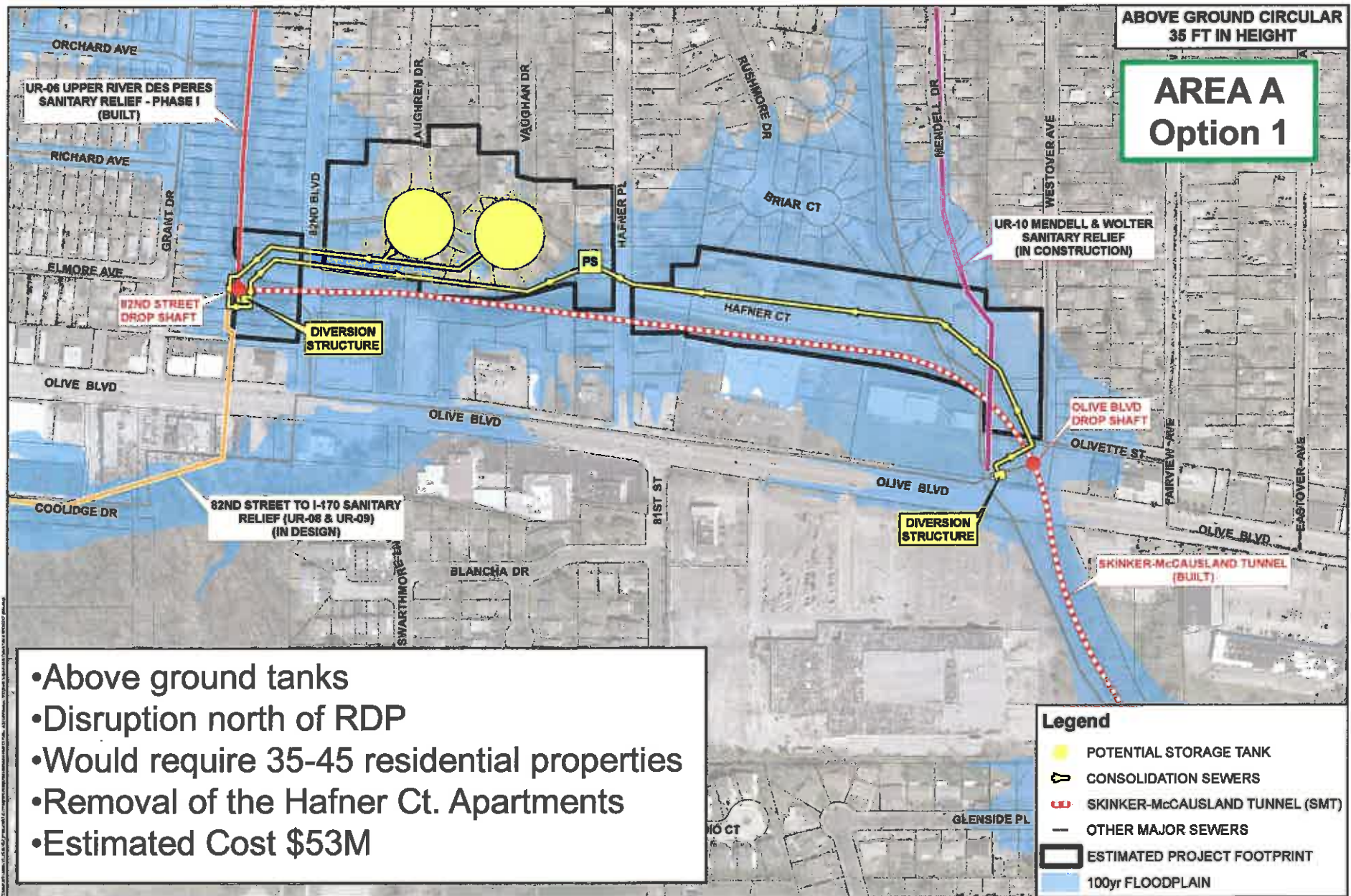


What is a Storage Facility?

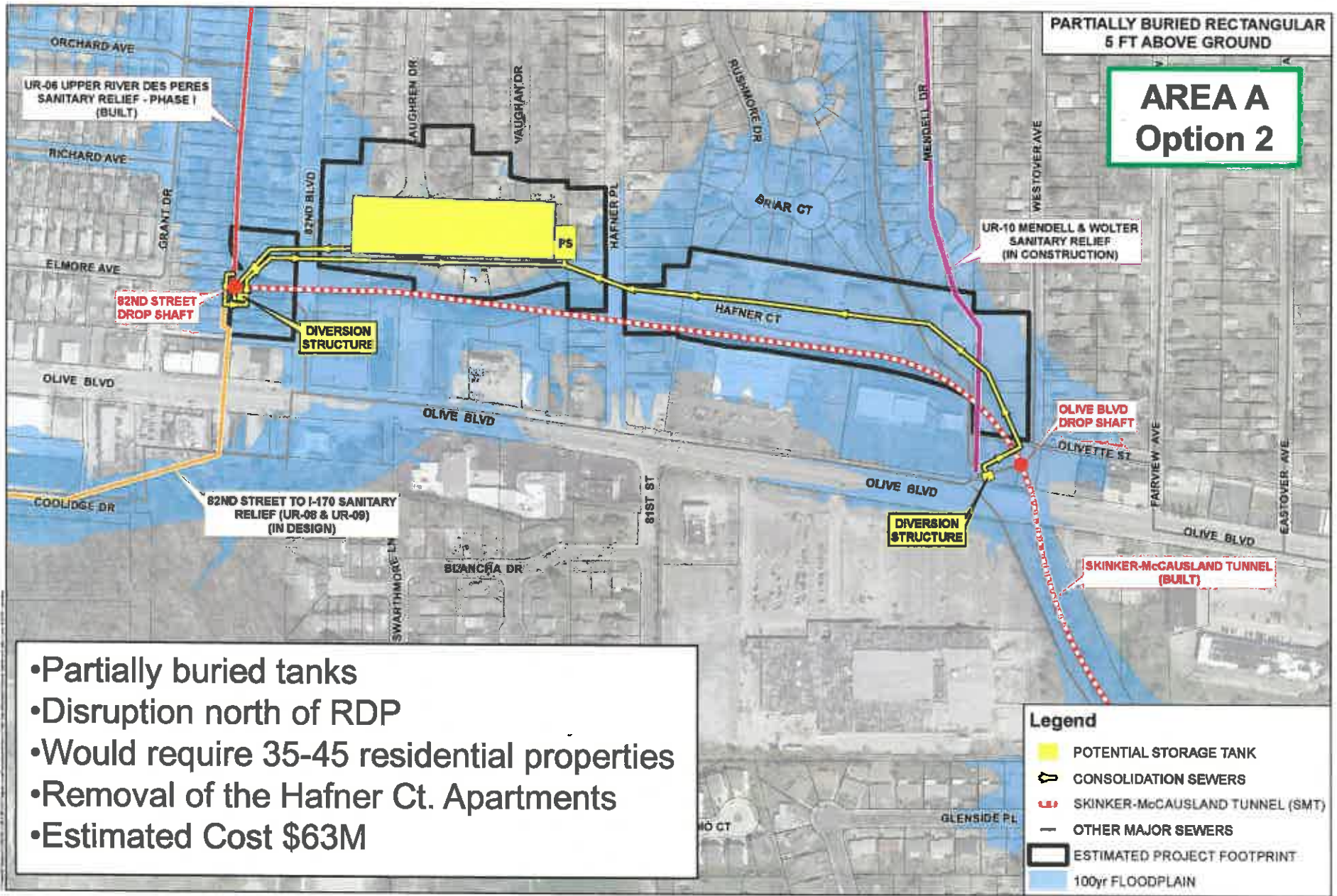


Potential Solution Areas - 5 Areas

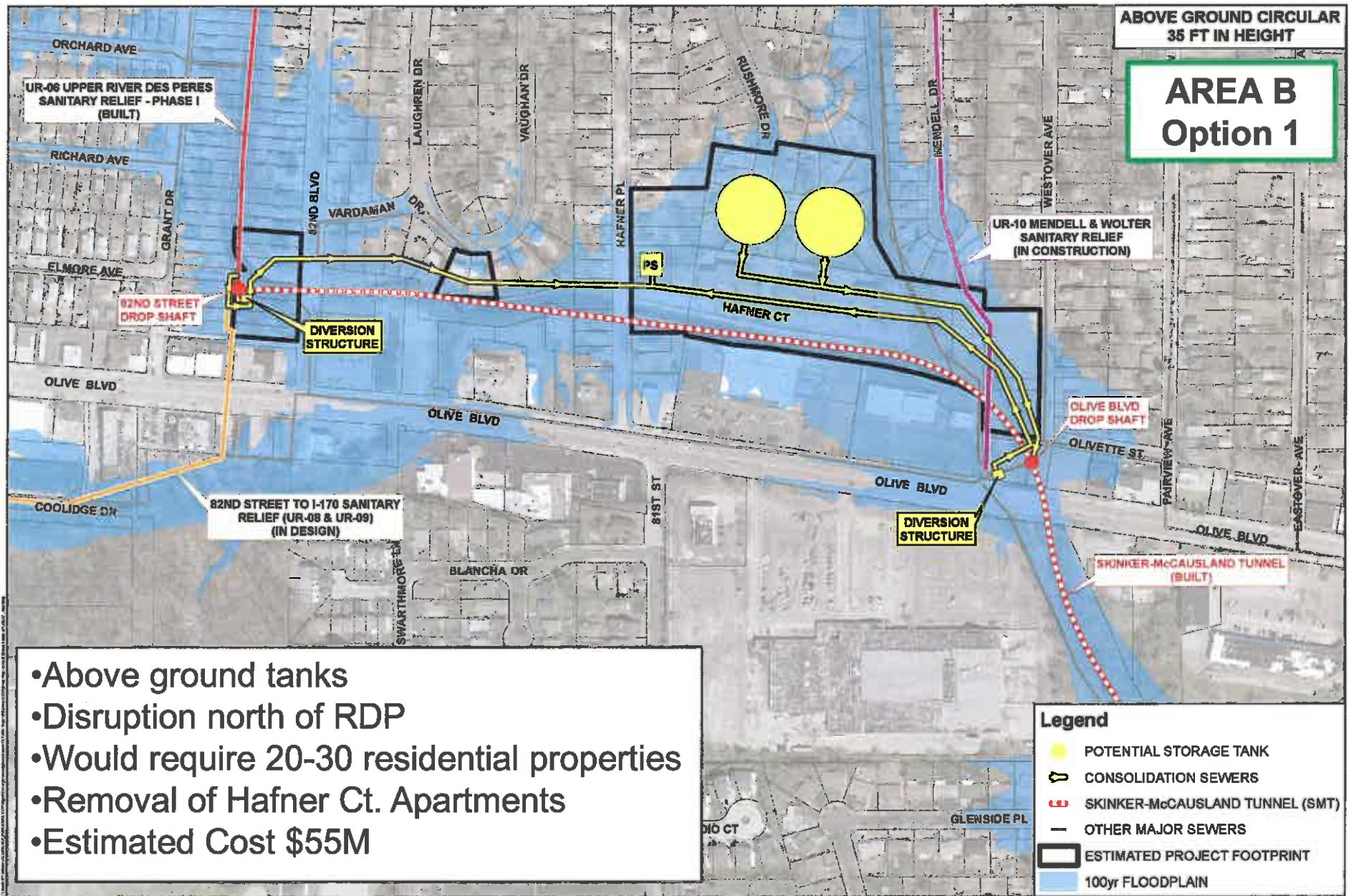




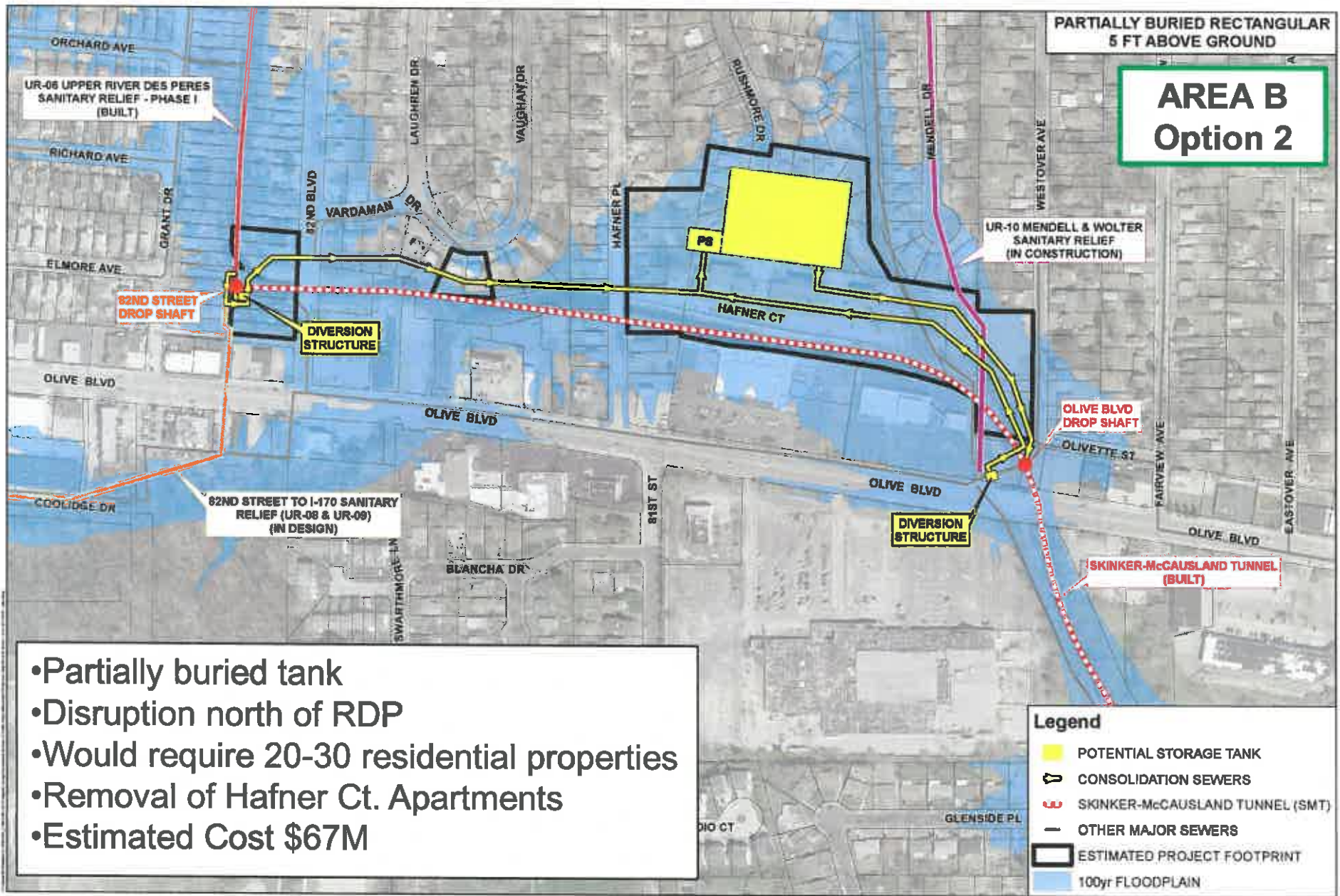
- Above ground tanks
- Disruption north of RDP
- Would require 35-45 residential properties
- Removal of the Hafner Ct. Apartments
- Estimated Cost \$53M



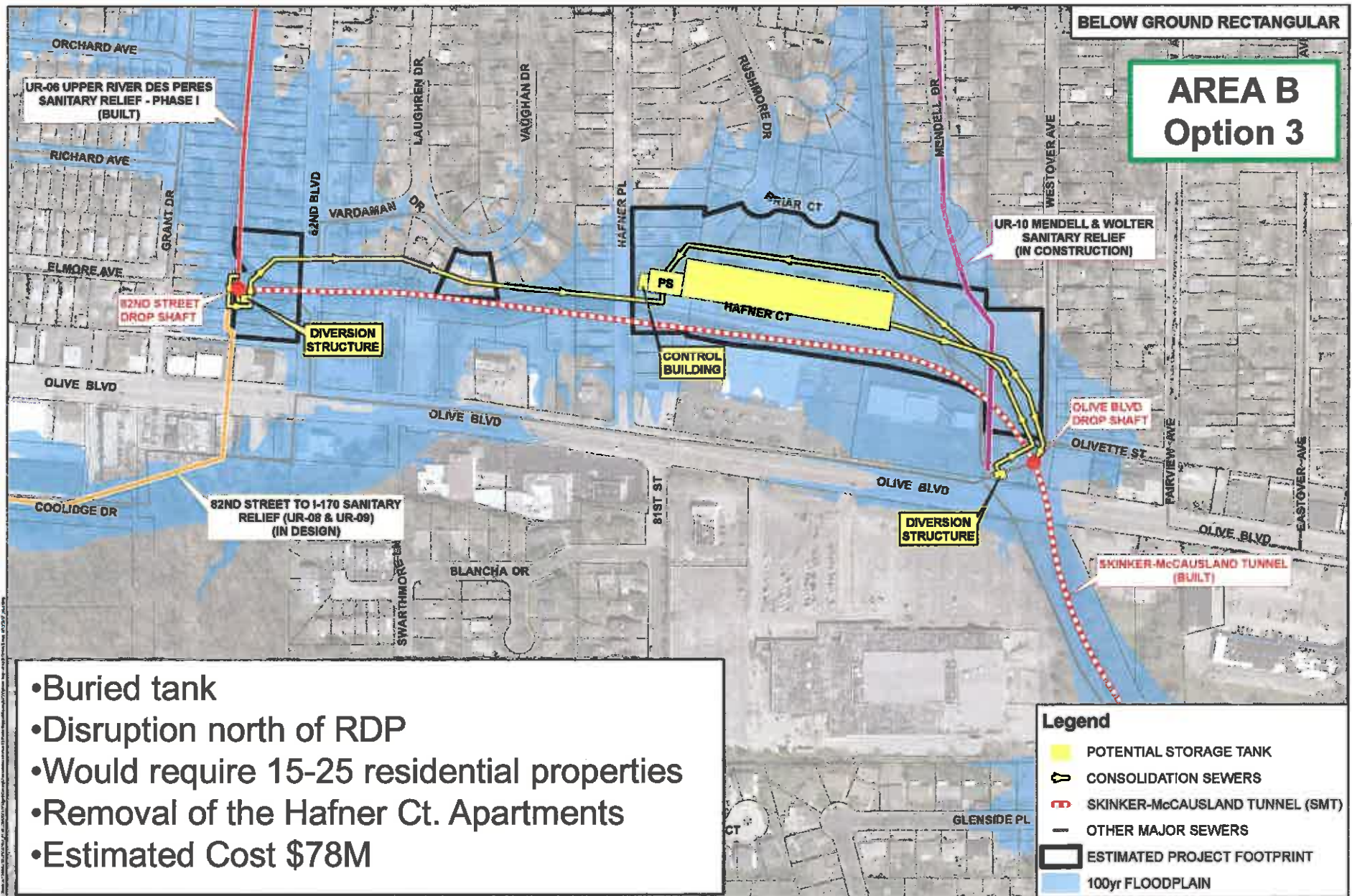
- Partially buried tanks
- Disruption north of RDP
- Would require 35-45 residential properties
- Removal of the Hafner Ct. Apartments
- Estimated Cost \$63M



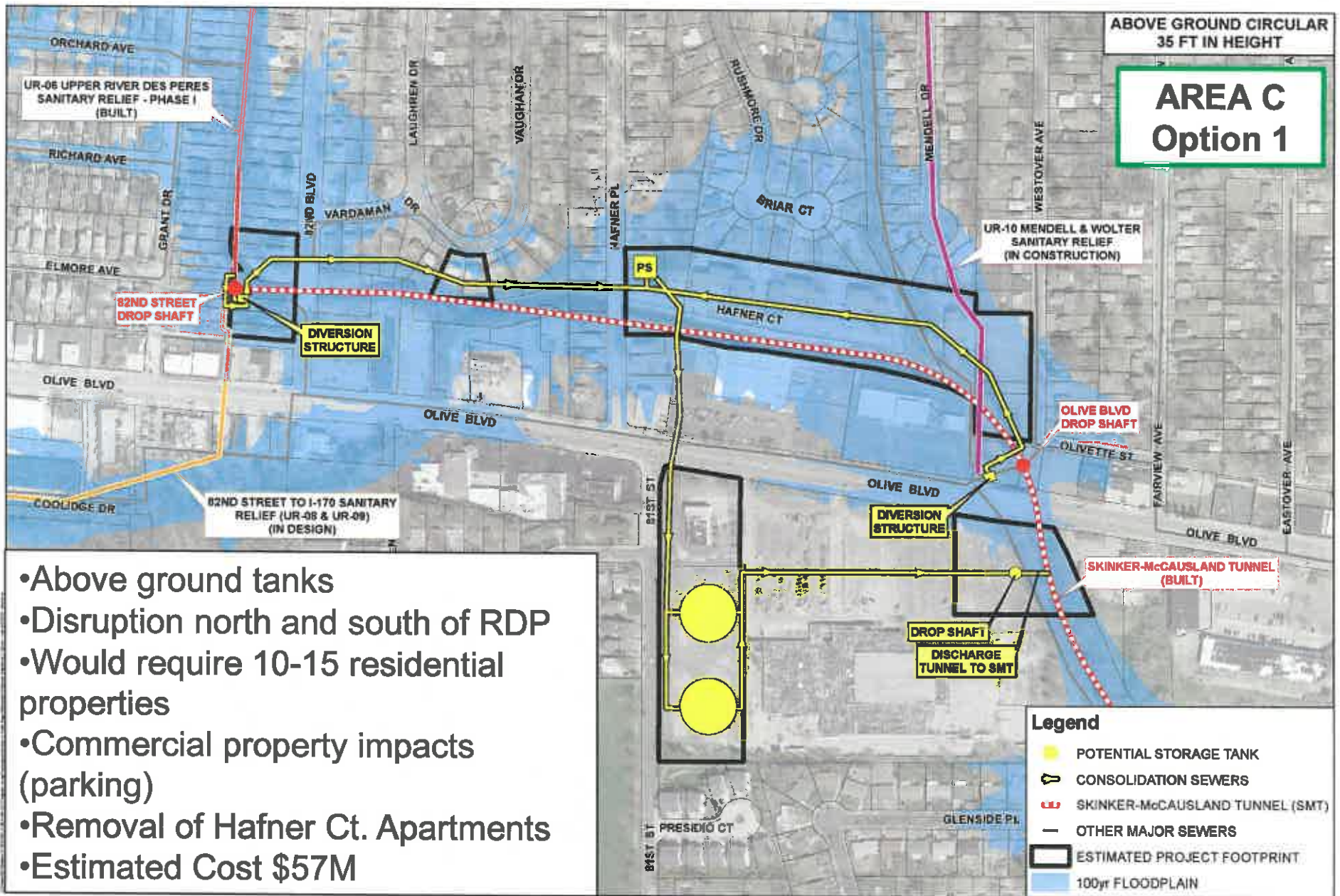
- Above ground tanks
- Disruption north of RDP
- Would require 20-30 residential properties
- Removal of Hafner Ct. Apartments
- Estimated Cost \$55M



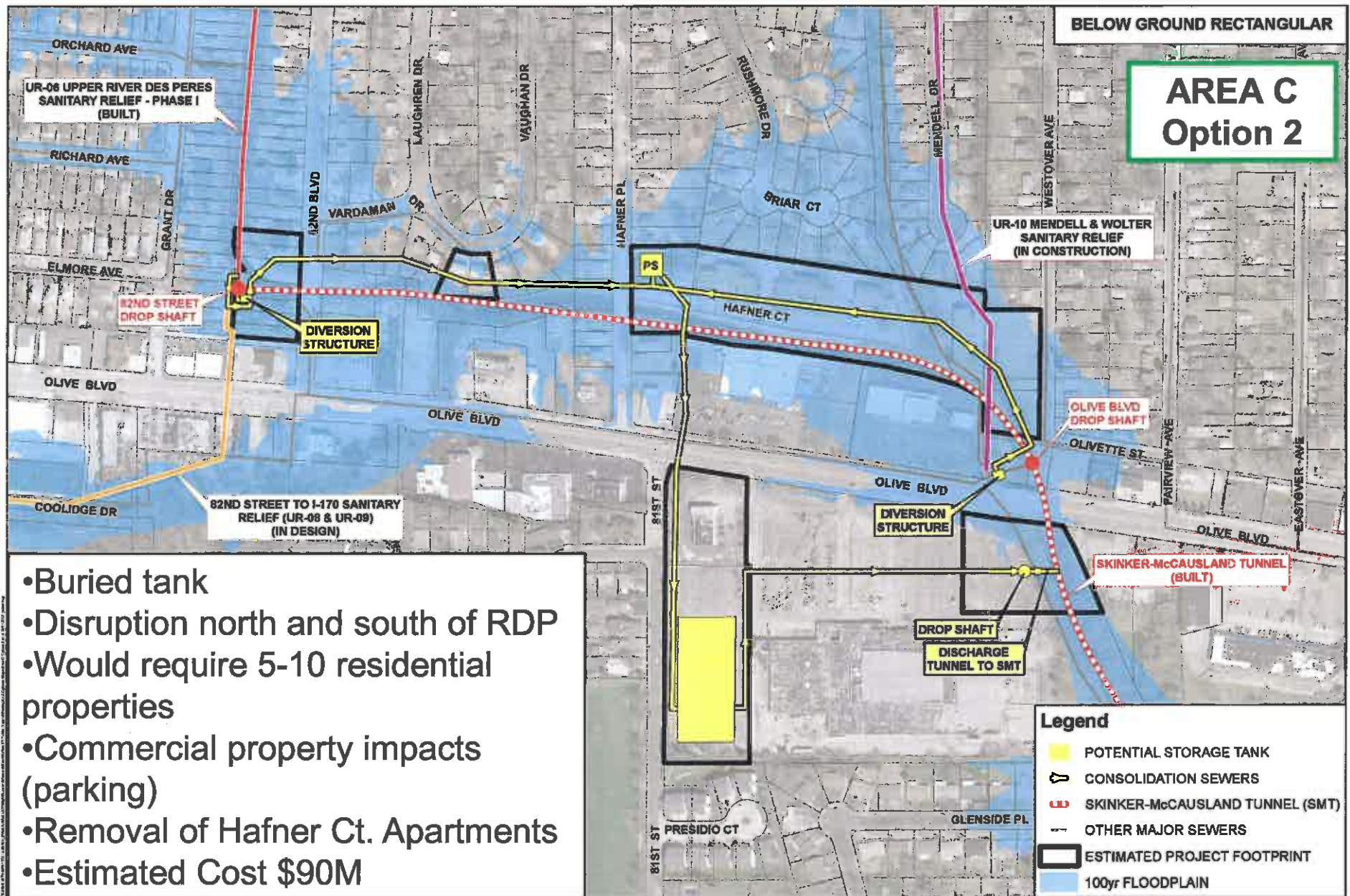
- Partially buried tank
- Disruption north of RDP
- Would require 20-30 residential properties
- Removal of Hafner Ct. Apartments
- Estimated Cost \$67M

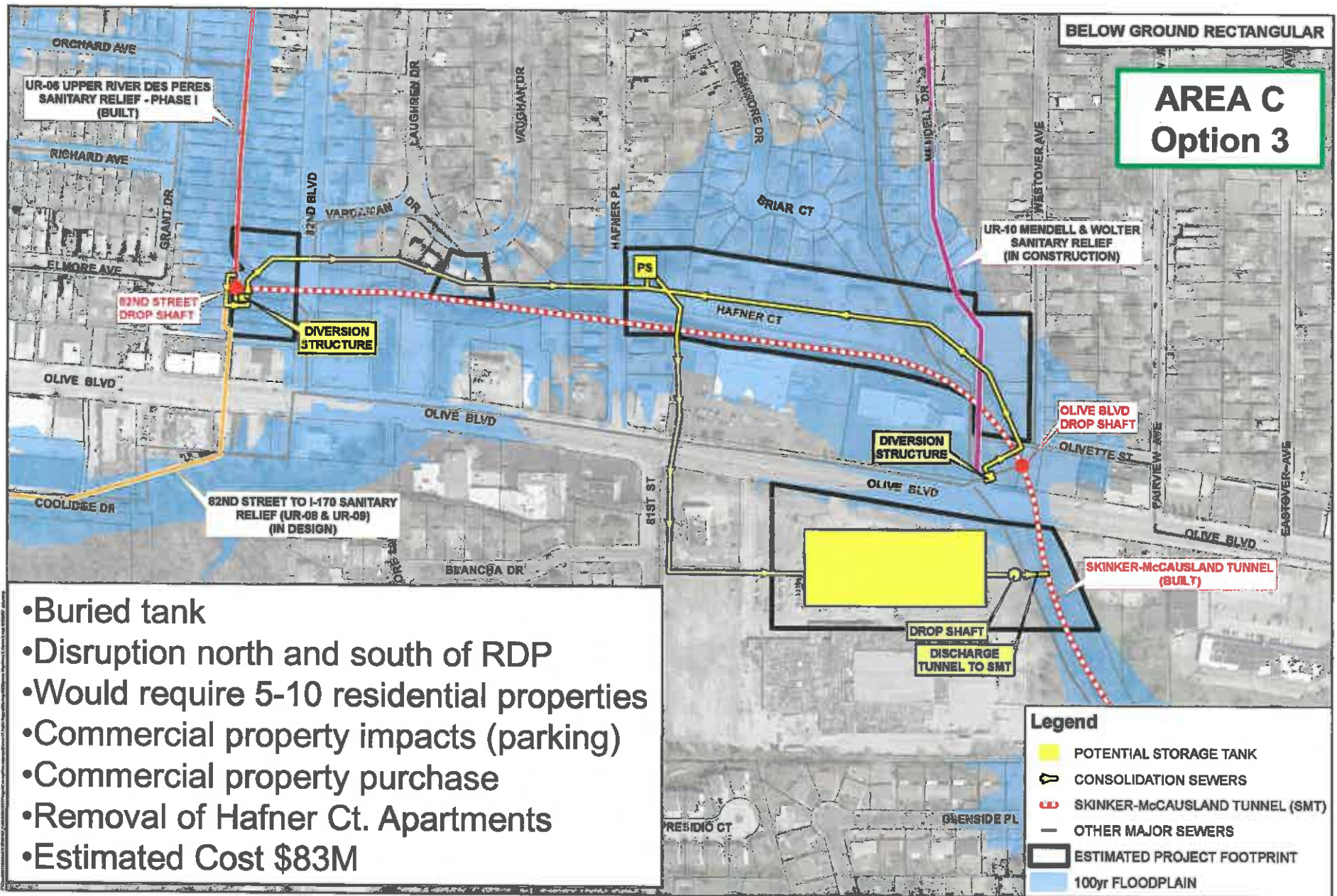


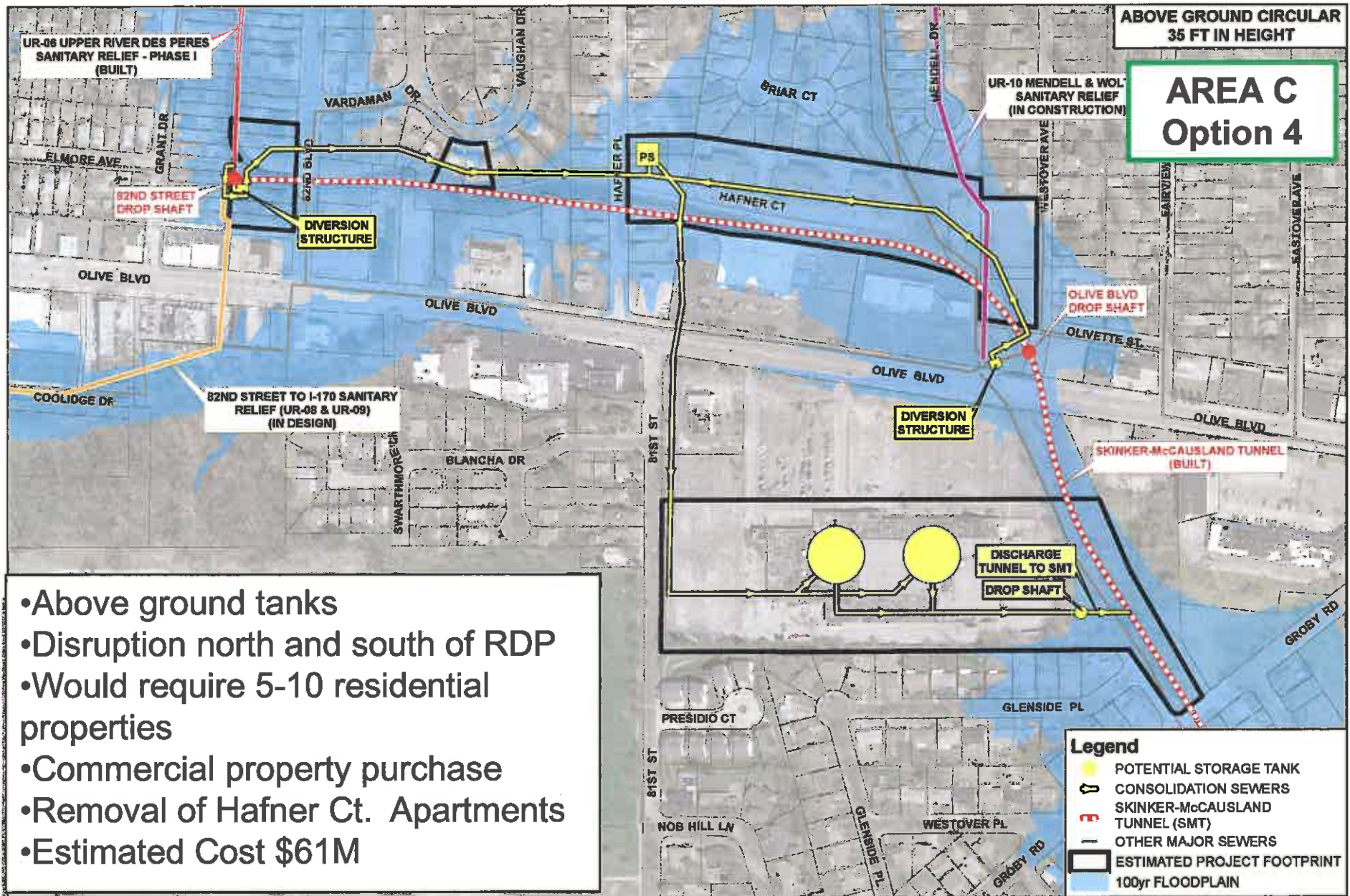
- Buried tank
- Disruption north of RDP
- Would require 15-25 residential properties
- Removal of the Hafner Ct. Apartments
- Estimated Cost \$78M



- Above ground tanks
- Disruption north and south of RDP
- Would require 10-15 residential properties
- Commercial property impacts (parking)
- Removal of Hafner Ct. Apartments
- Estimated Cost \$57M

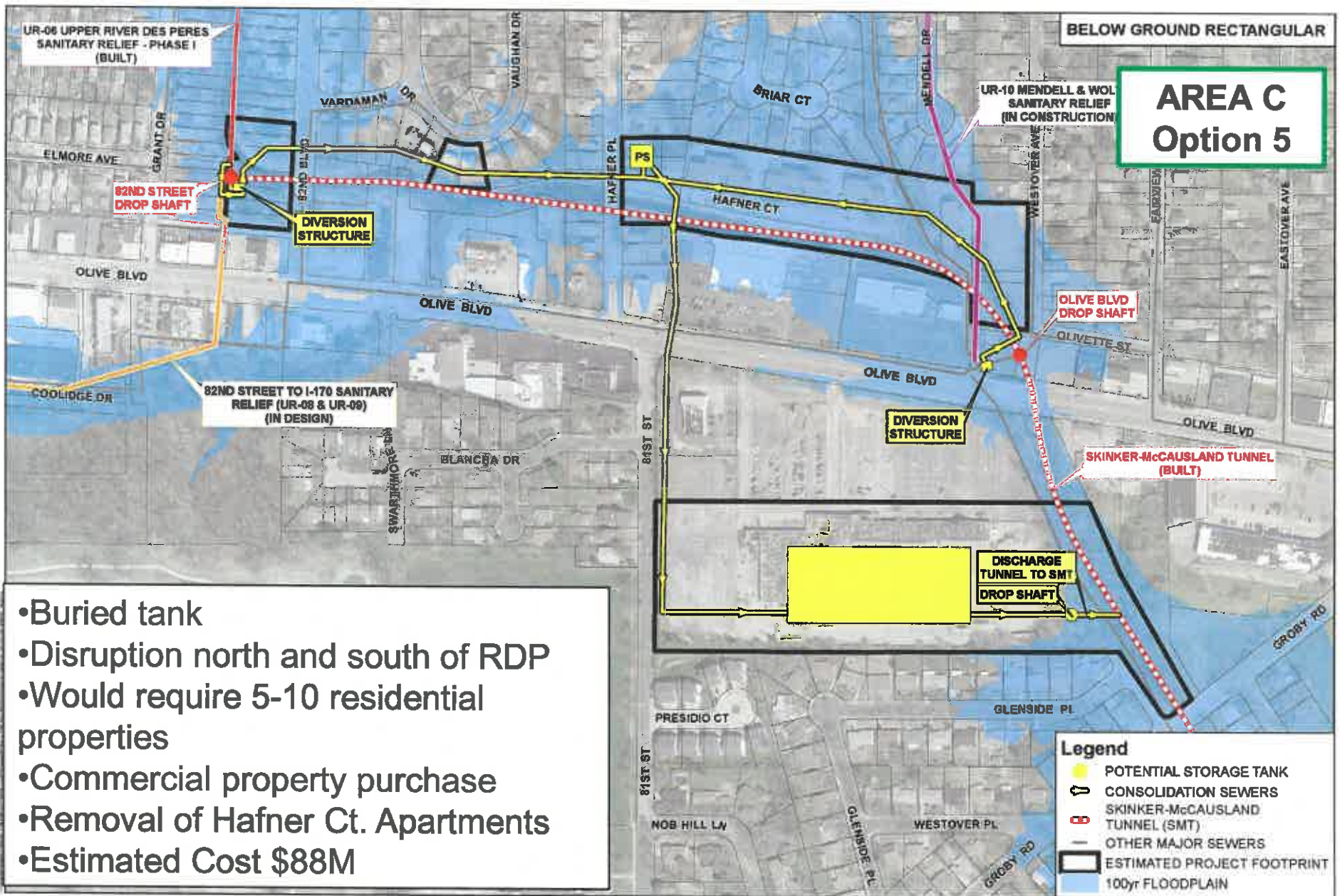




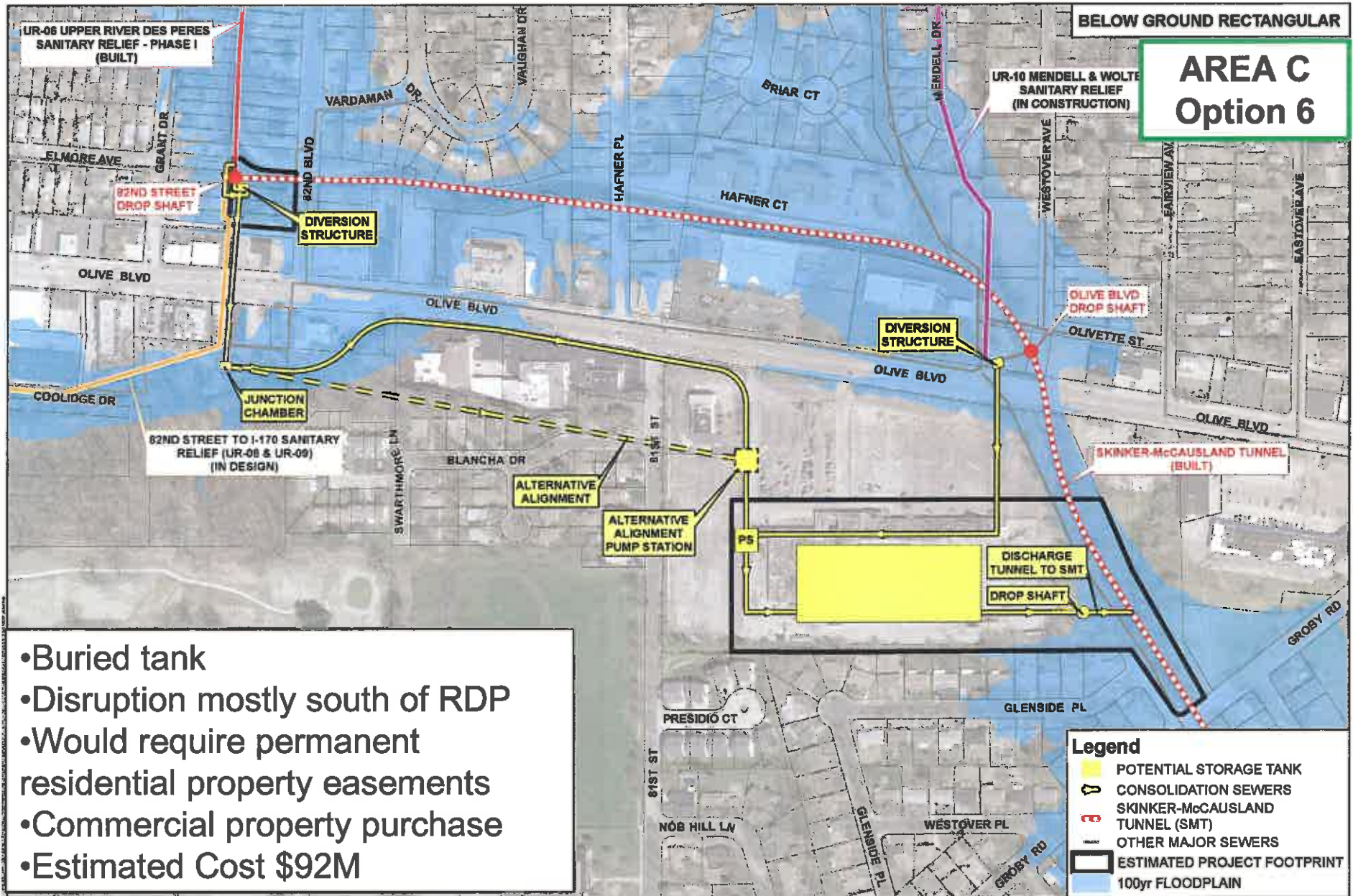


**AREA C
Option 4**

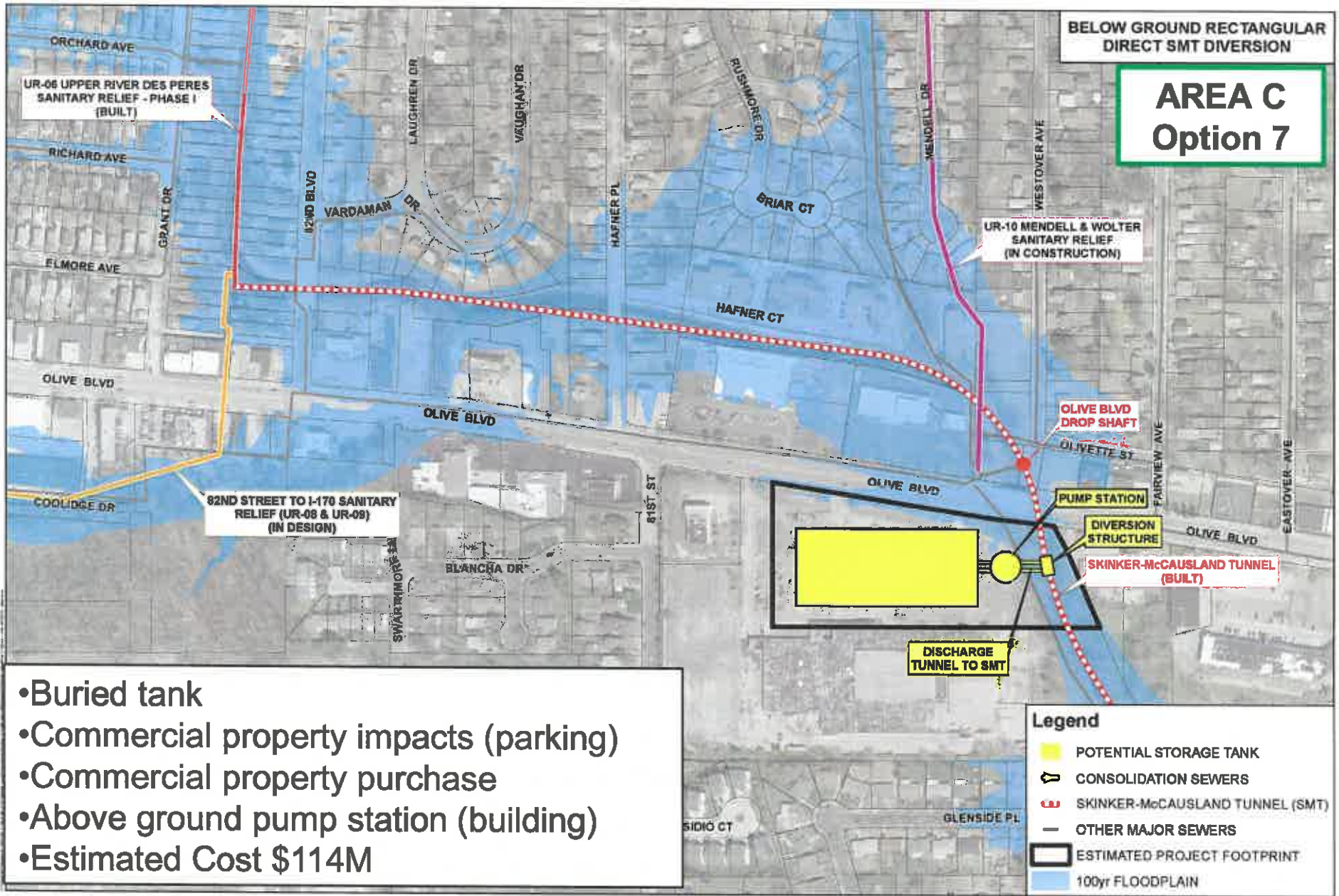
- Above ground tanks
- Disruption north and south of RDP
- Would require 5-10 residential properties
- Commercial property purchase
- Removal of Hafner Ct. Apartments
- Estimated Cost \$61M



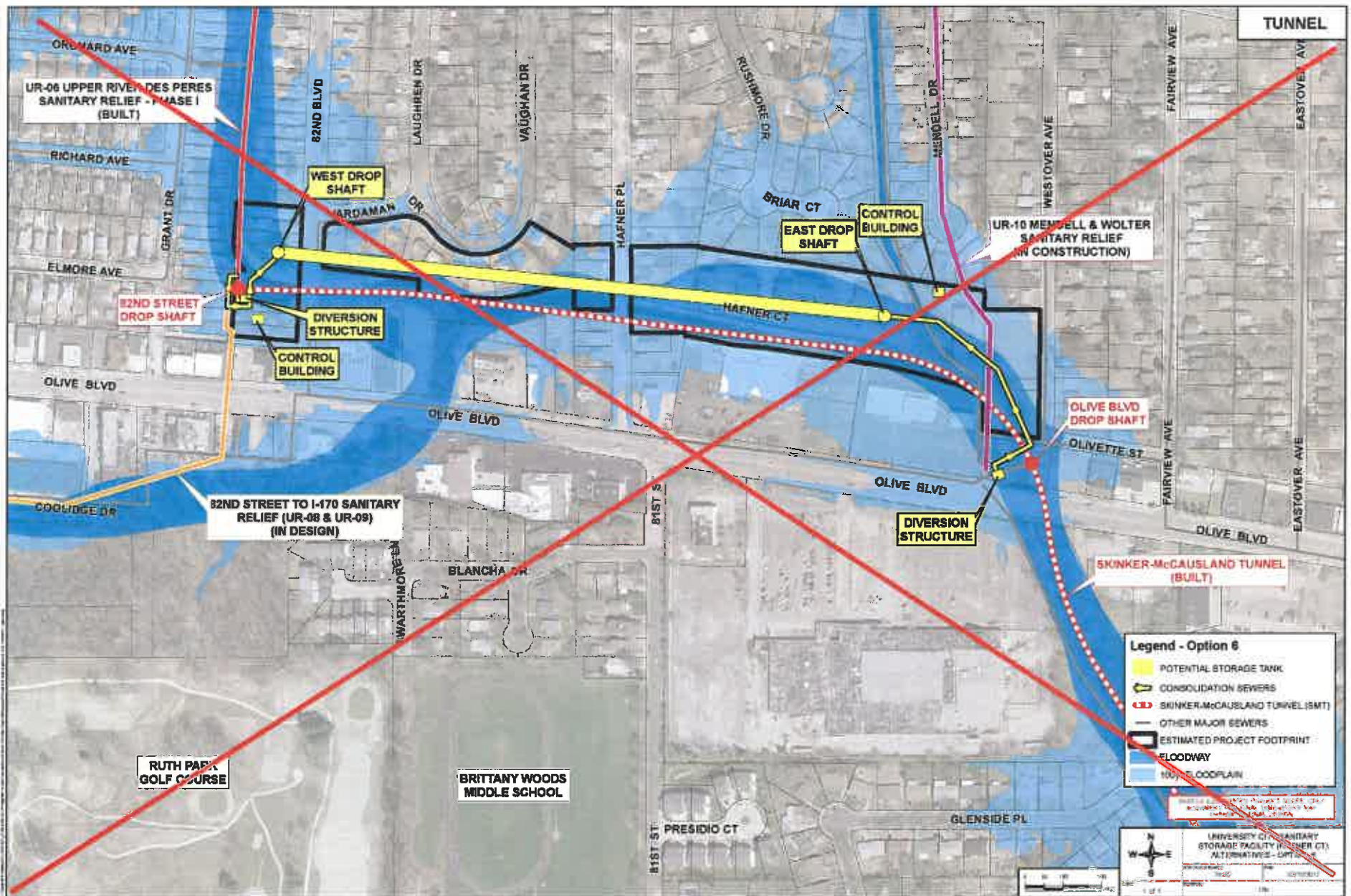
- Buried tank
- Disruption north and south of RDP
- Would require 5-10 residential properties
- Commercial property purchase
- Removal of Hafner Ct. Apartments
- Estimated Cost \$88M



- Buried tank
- Disruption mostly south of RDP
- Would require permanent residential property easements
- Commercial property purchase
- Estimated Cost \$92M

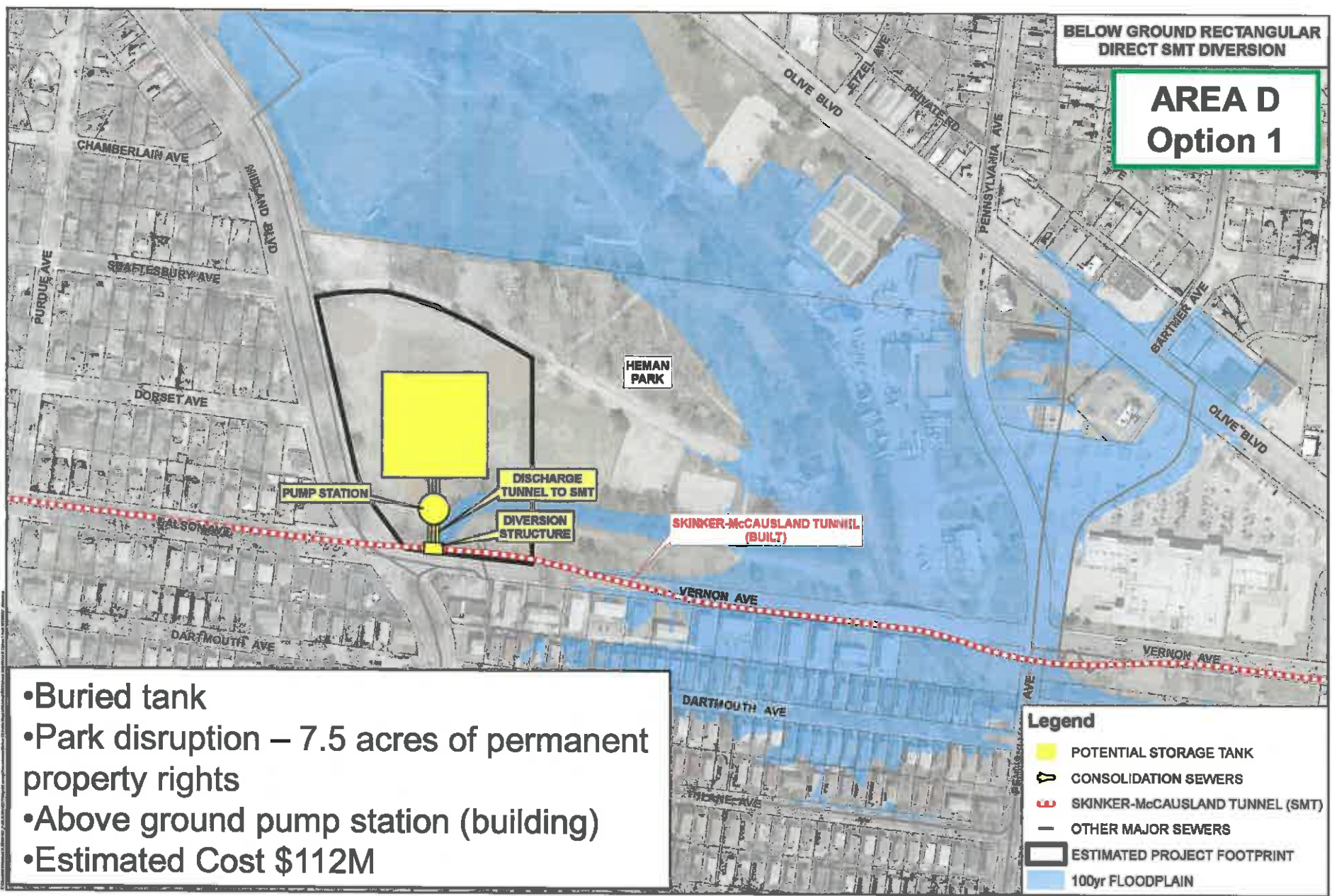


- Buried tank
- Commercial property impacts (parking)
- Commercial property purchase
- Above ground pump station (building)
- Estimated Cost \$114M



BELOW GROUND RECTANGULAR
DIRECT SMT DIVERSION

AREA D
Option 1

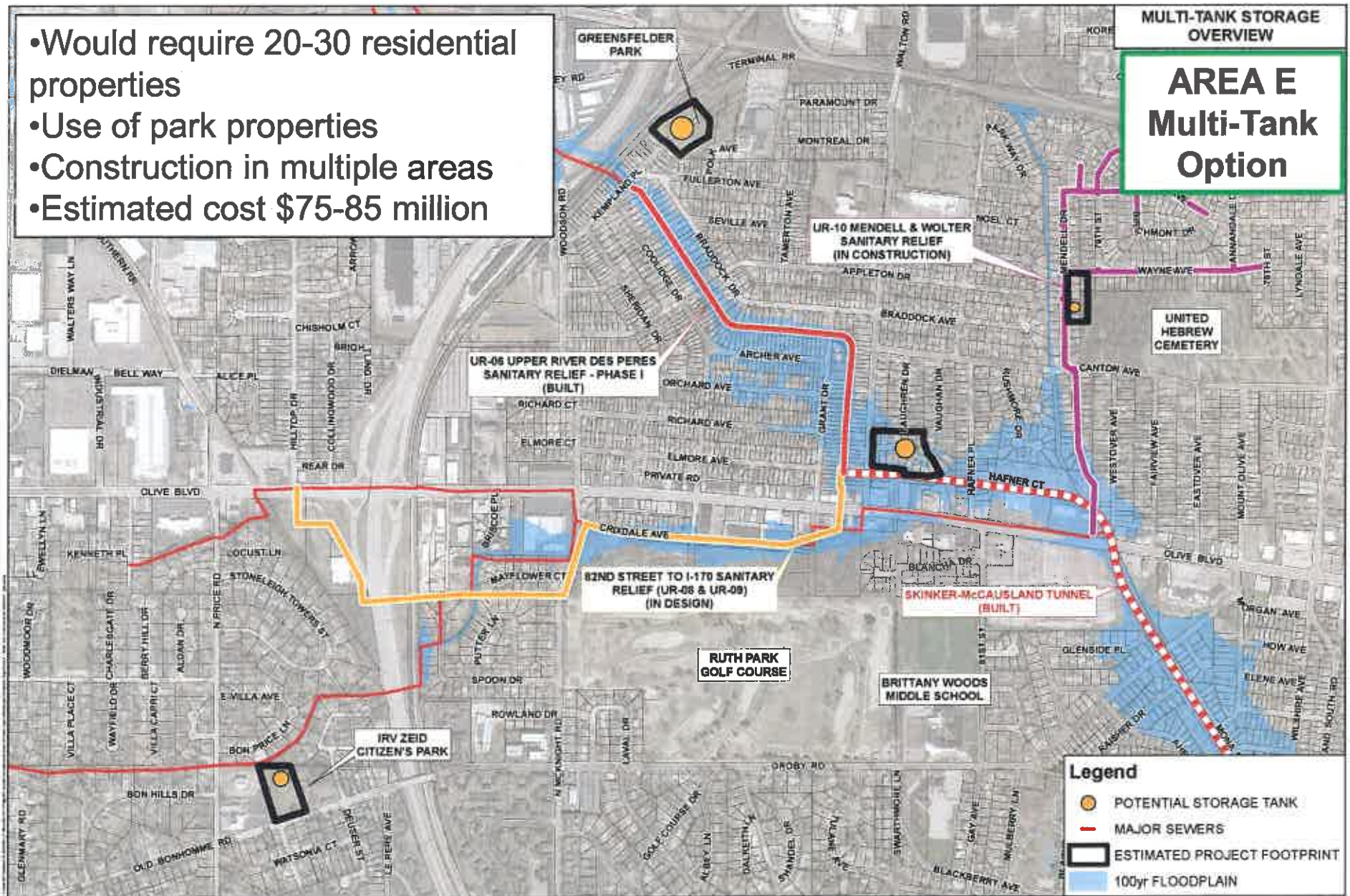


- Buried tank
- Park disruption – 7.5 acres of permanent property rights
- Above ground pump station (building)
- Estimated Cost \$112M

- Would require 20-30 residential properties
- Use of park properties
- Construction in multiple areas
- Estimated cost \$75-85 million

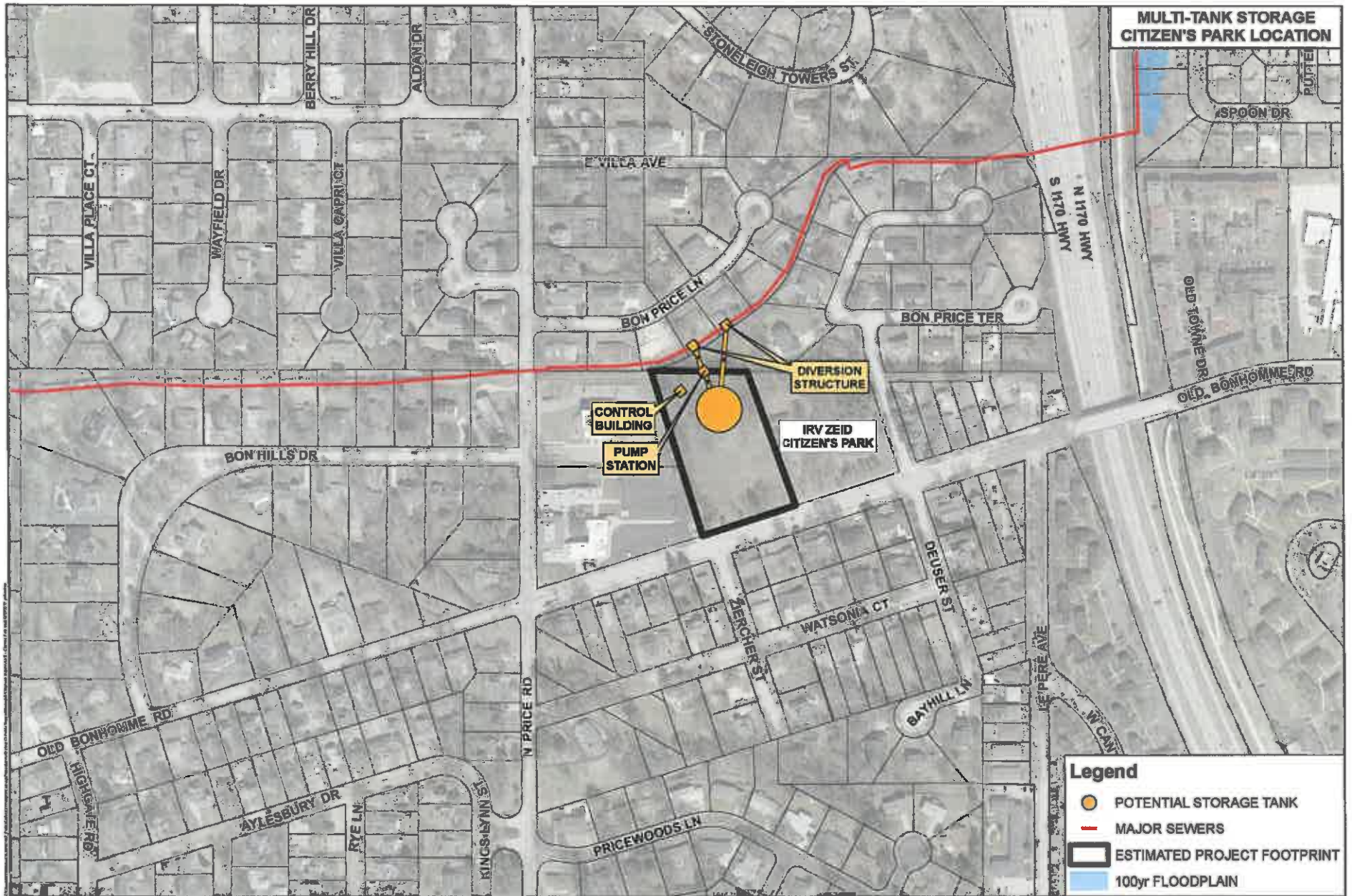
MULTI-TANK STORAGE OVERVIEW

AREA E Multi-Tank Option

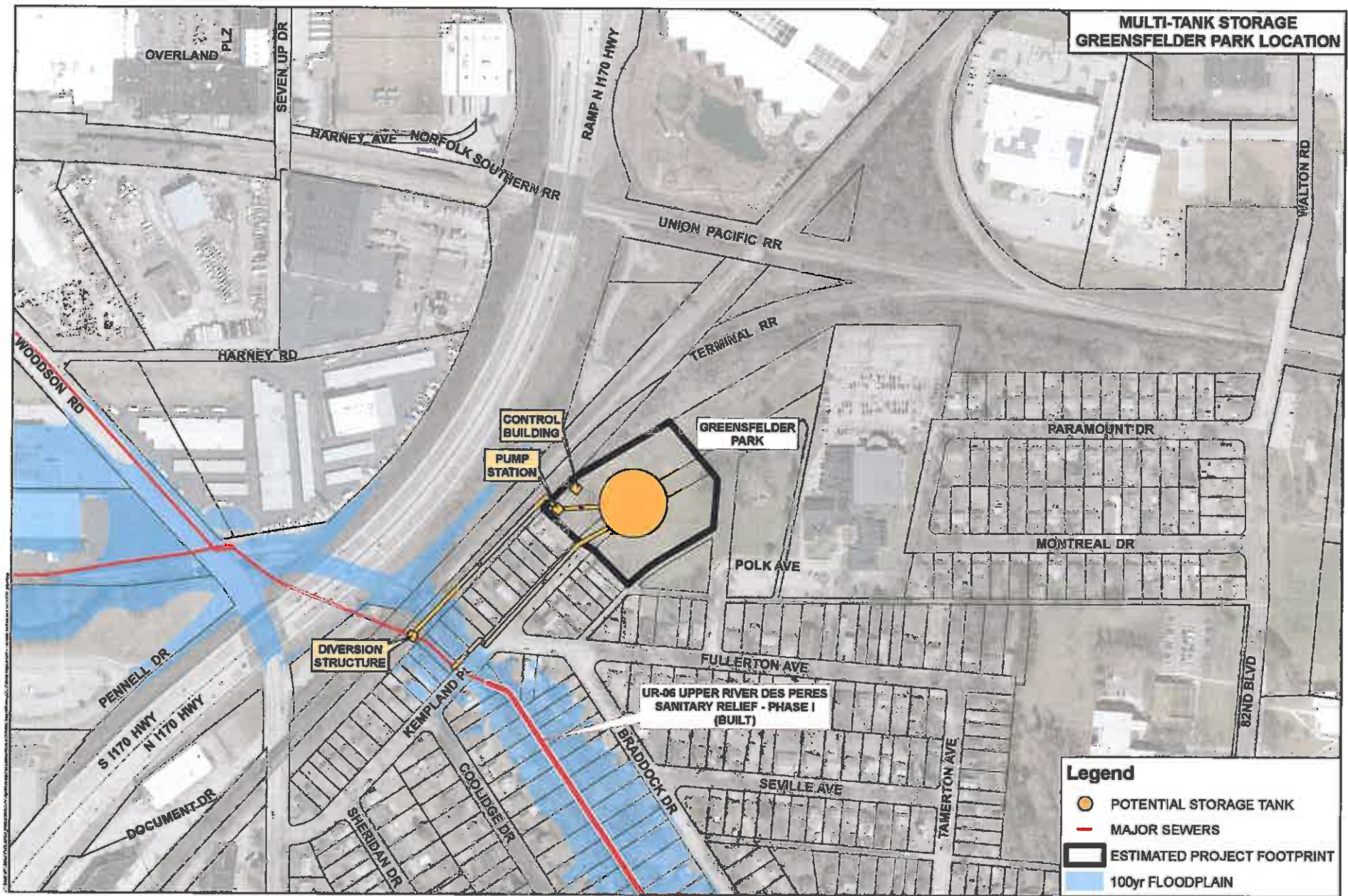


Legend





- POTENTIAL STORAGE TANK
- MAJOR SEWERS
- ESTIMATED PROJECT FOOTPRINT
- 100yr FLOODPLAIN

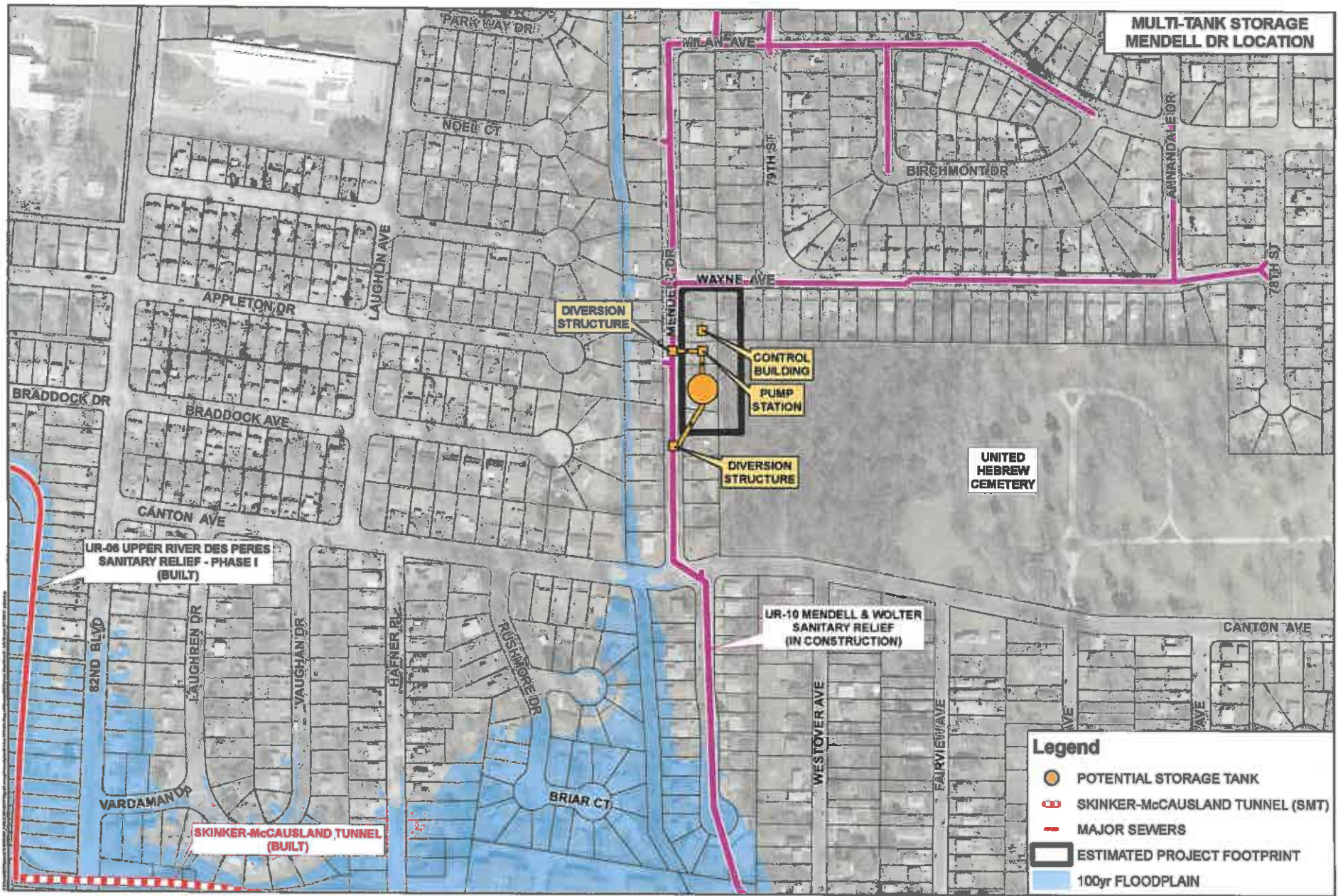


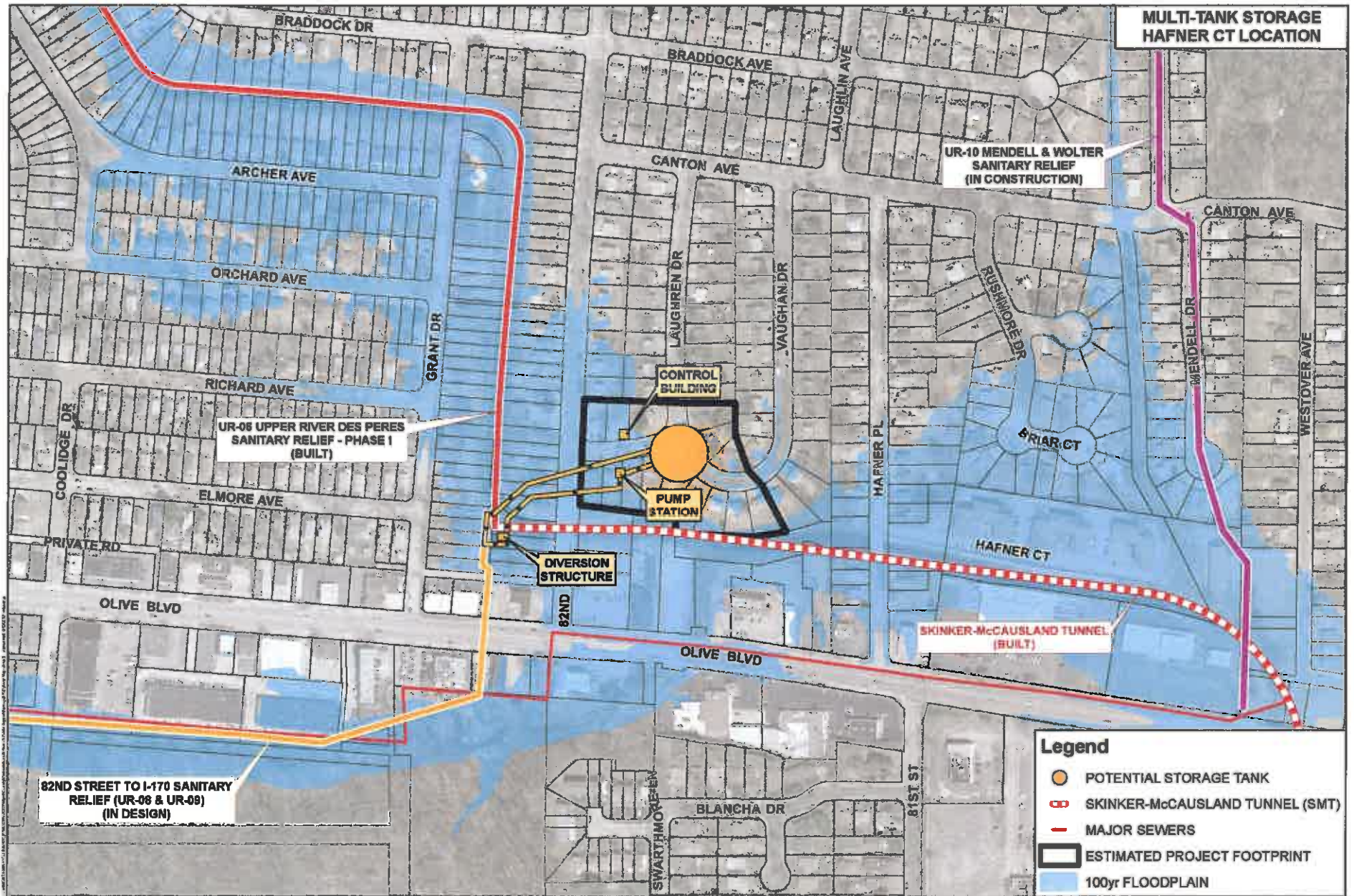
**MULTI-TANK STORAGE
GREENSFELDER PARK LOCATION**



Legend

-  POTENTIAL STORAGE TANK
-  MAJOR SEWERS
-  ESTIMATED PROJECT FOOTPRINT
-  100yr FLOODPLAIN





Feedback and Next Steps

🔹 Feedback

- Documenting Tonight's Comments
- Public Comment Forms Distributed
- Return Tonight or At a Later Time

🔹 Next Steps

- Additional Public Meeting to be Scheduled

🔹 Questions

PROJECT CONTACT INFORMATION
(314) 682-1608
UNIVERSITYCITYSTORAGE@burnsmcd.com

To Request Information

Sunshine Requests

Information Requests (Missouri Sunshine Law)

Tim Snoke

Secretary-Treasurer

Official Records Keeper of District Public
Information

(314) 768-6200

SunshineRequests@stlmsd.com