


“TOGETHER WE
ARE STRONG”

DIVERSITY
SCULPTURES



WHAT SPARKED THE IDEA...



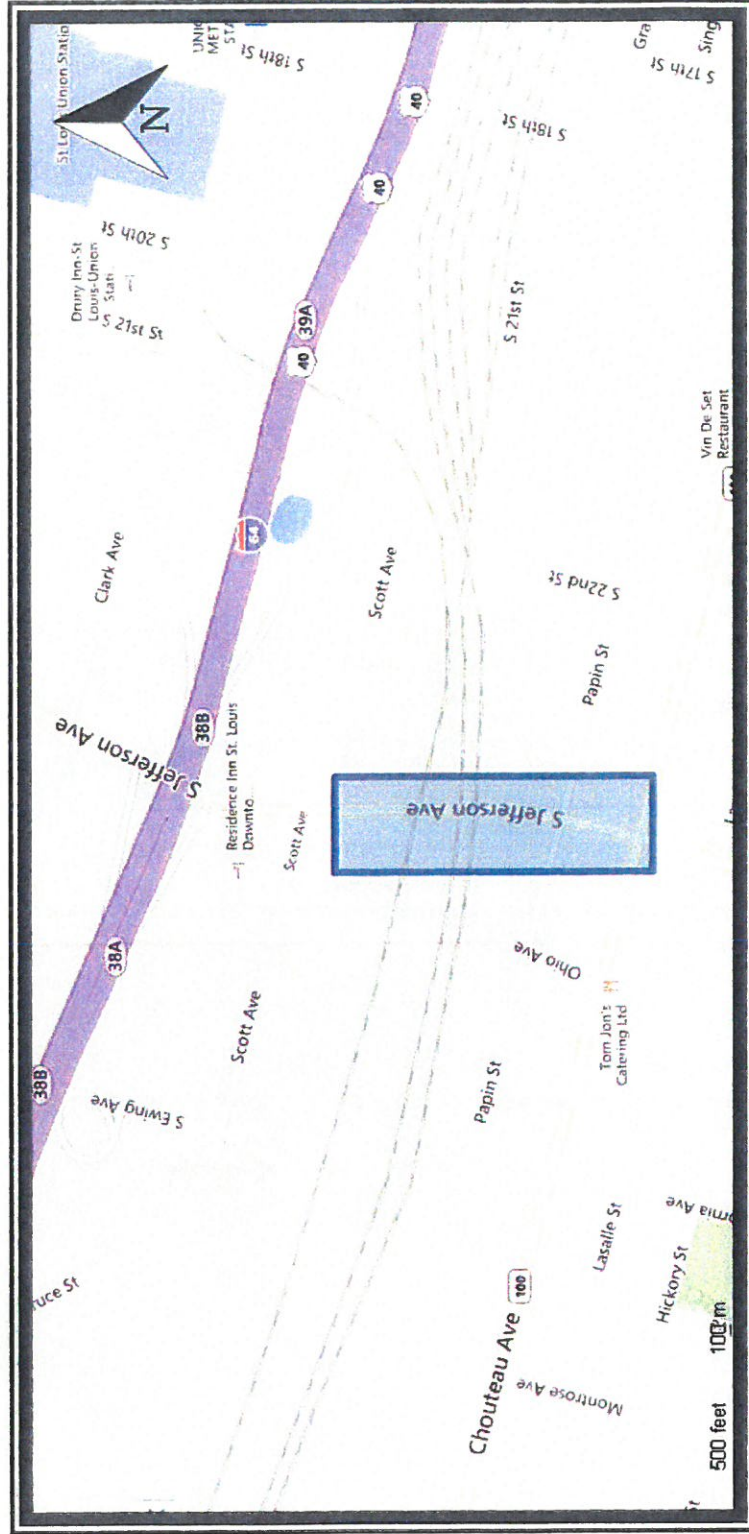
 brightside
ST. LOUIS



Making St. Louis a greener place to call home



PROPOSED LOCATION



Located on South Jefferson Avenue, south of Hwy 40 between Scott Avenue and Chouteau.



The following pictures were
taken on June 21, 2018









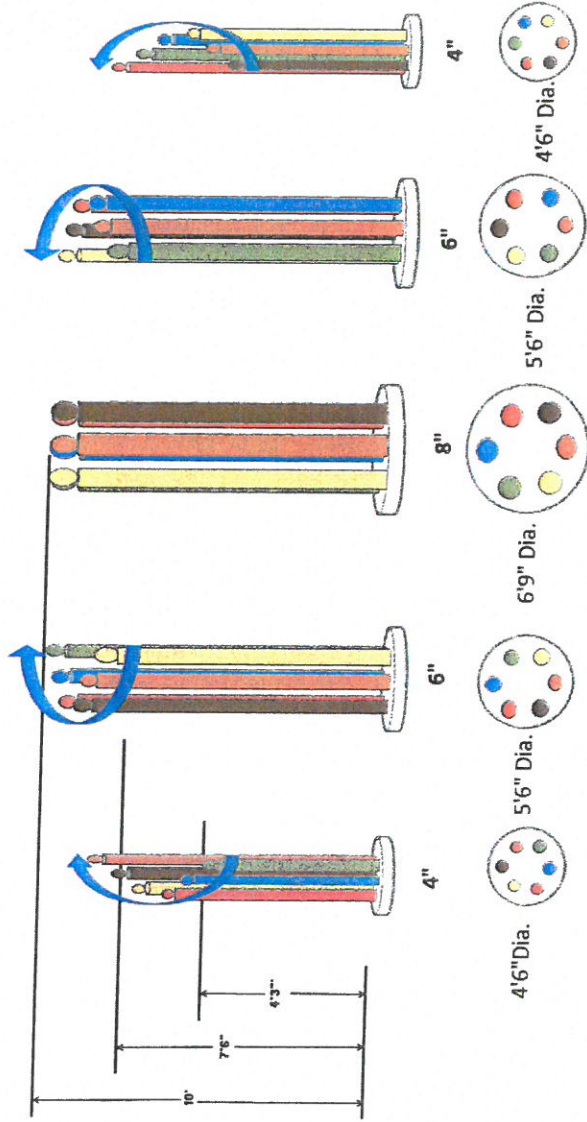




AND HERE'S WHAT WE
ARE PROPOSING...



Jefferson and Hwy 40 Overpass

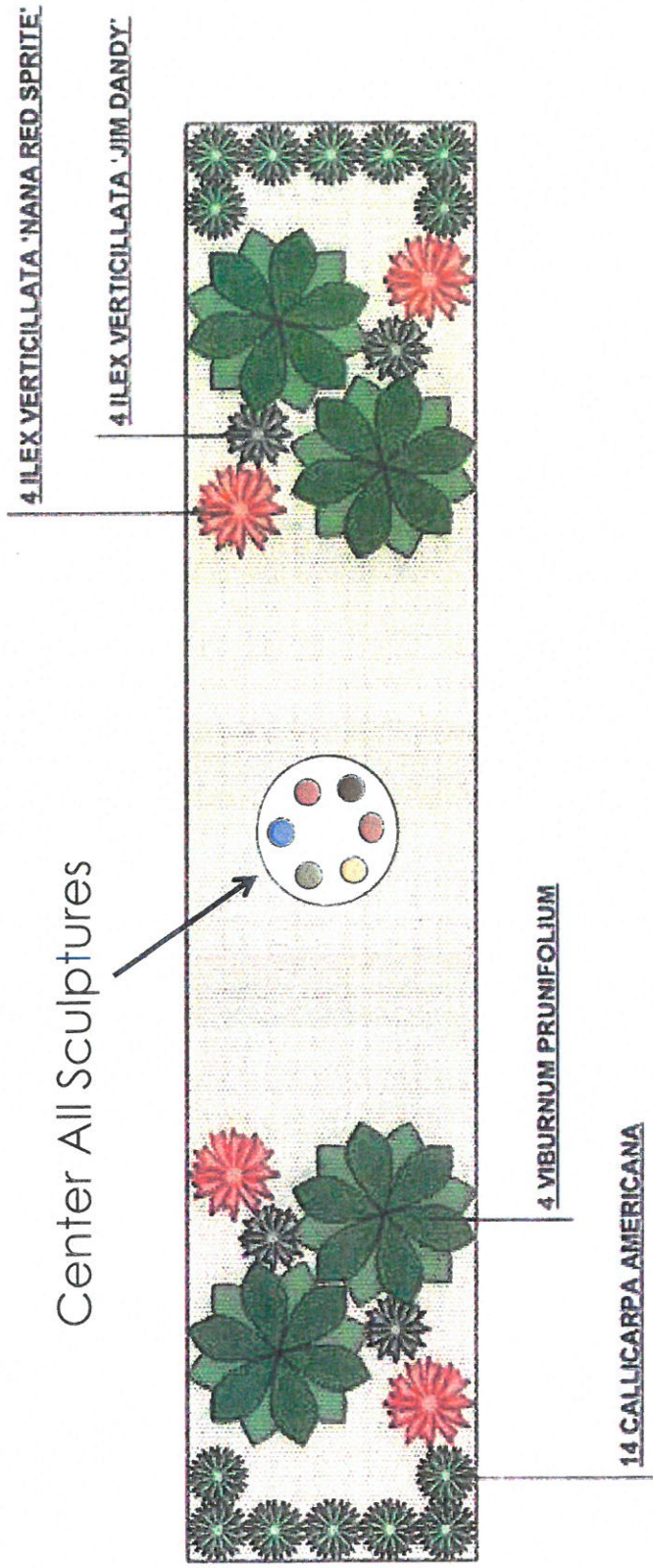


- The sculptures are constructed in progression using 4", 6" & 8" aluminum schedule 40 industrial powder coated pipe. The top of the pipes are cut at a 45% angle facing outwards. All pipes will be capped at the top to keep the birds out.
- Each of the Sculptures' pipes are anchored independently in concrete (4' 6", 5' 6" & 6' 9" dia.) for lasting durability, and ease of maintenance and repair.
- The signs located on planter boxes will be "3-D composite" making them maintenance free.
 - ✓ The colors represent various diversity groups within our city.
 - ✓ As we work together and grow our differences narrow.
 - ✓ As we approach the center from each direction of the overpass we are reminded, **"Together We Are Strong"**.



All landscaped areas around each of the sculptures were designed by the St. Louis parks department for low maintenance. All of the plants were purchased and installed in 2016 as a donation to the City of St. Louis.

Center All Sculptures





The first sculpture will contain six 4" pipes (one of each color). They vary in height from 4'3" – 8' tall mounted on a 4'6" concrete base.



SCULPTURE 1 of 5



The second sculpture consists of six 6" pipes. They vary in height from 8' – 9'8" tall mounted on a 5'6" concrete base.



SCULPTURE 2 of 5



The third sculpture consists of six 8" pipes.
All the same height approximately 10' tall mounted on a 6'9" concrete base.



SCULPTURE 3 of 5



The fourth sculpture consists of six 6" pipes. They vary in height from 8' – 9'8" tall mounted on a 5'6" concrete base.



SCULPTURE 4 of 5



The fifth sculpture contains six 4" pipes. They vary in height from 4'3" – 8' tall mounted on a 4'6" concrete base.



SCULPTURE 5 of 5



As we leave the overpass from either direction we will be reminded,
"Together We Are Strong".





Please notice **the bricked area's** between the beds of ground cover.





We plan on matching the current brick pattern/design around each of the six planter boxes to reduce maintenance.





We will also install the same brick pattern around each of the five sculptures. Adding this brick will reduce the ongoing maintenance approximately 50%.





10' Model of the Diversity Sculpture Project.

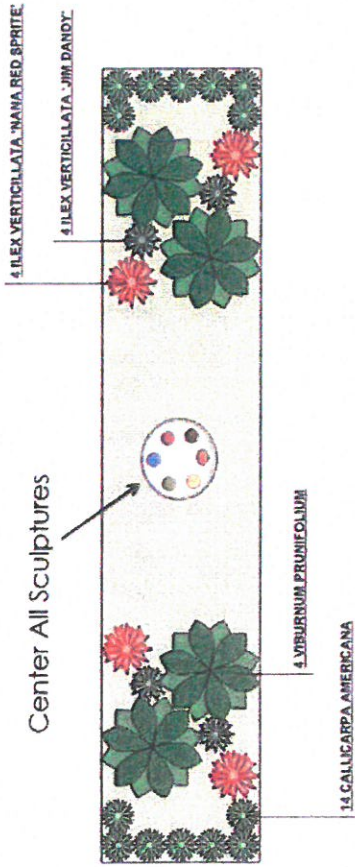




WHAT PEOPLE IN THE
AREA ARE SAYING
ABOUT THE IDEA...



"STL is a diverse, culturally-rich city. But, that diversity is perceived as a negative 9 times out of 10. Let's celebrate it. Let's be proud!"
 -Brennan Girdler



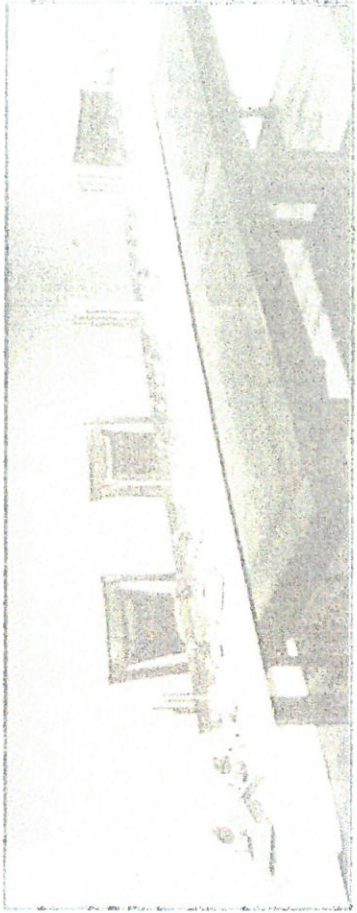
"Simple, positive, poignant message conveyed well. Easily interpreted by the motorist/pedestrian. Very inspirational concept"
 -Michael Sean Coleman



"I LOVE THIS!
 Our city, community needs this!"
 -Dane Anderson

"Fine idea- creates a unique model project for advancing the City of St. Louis"
 -Ronald Taylor

"We need more art. The fact that it's paid for already makes this a no-brainer"
 -Joel Schad



6878 Delmar, University City, MO









Location Sign

DIVERSITY Sculptures

The colors represent the various diversity groups within our city.

As we work together our differences narrow.

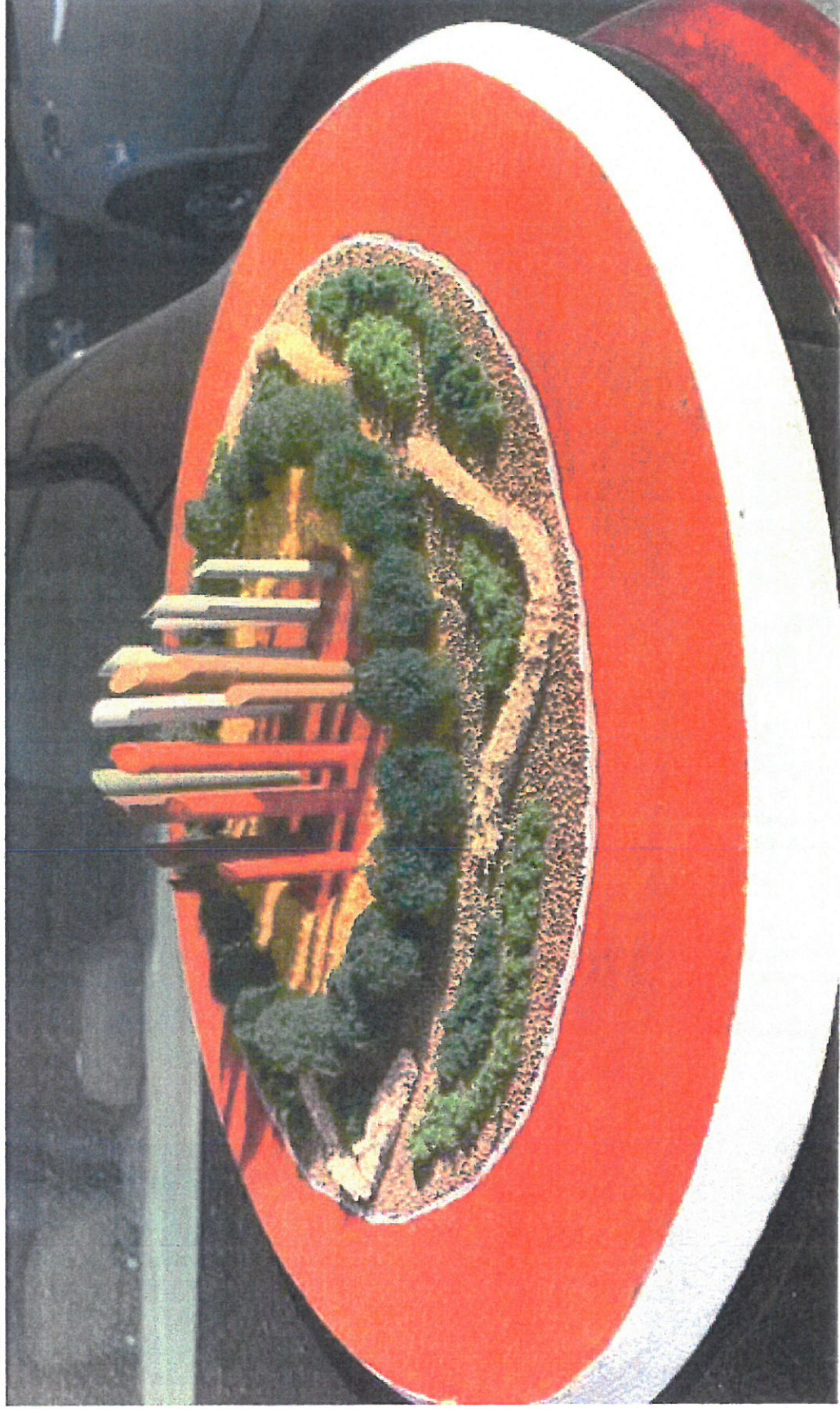
Together we are strong.

Designed by: David Emring

Top view of model



Side view of model





DIVERSITY
SCULPTURES

David A. Emring

3820 Summerview Drive

St. Charles, MO 63304

(314) 393-2212

daveemring@msn.com