

University City Space Needs Study
Concept Design Options – Public Safety

June 22, 2020

U
n
i
v
e
r
s
i
t
y
o
f
C
h
i
c
a
g
o

Concept Design Option Review

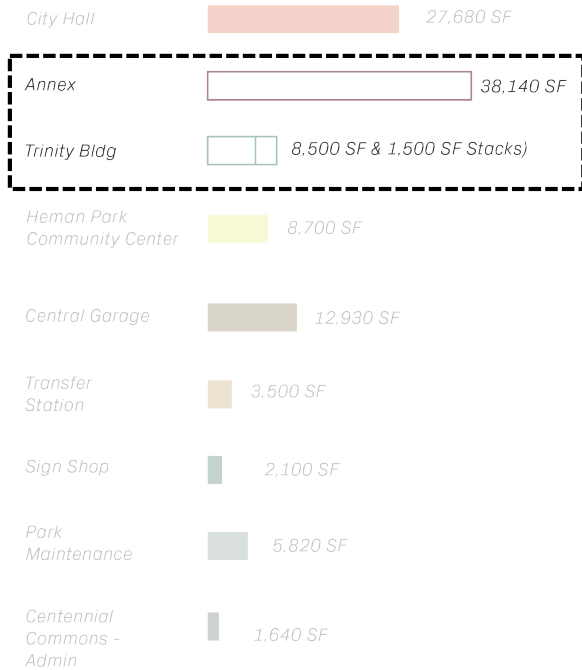
Option 1:

- Test for ideal workplace and department locations across available facilities
- **Police + Municipal Court programs remain together in the Annex (per previous study)**
- Recommend areas for improvements / upgrades including for accessibility
- Revitalization of historically significant building(s)

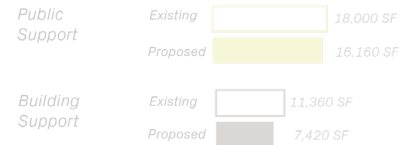
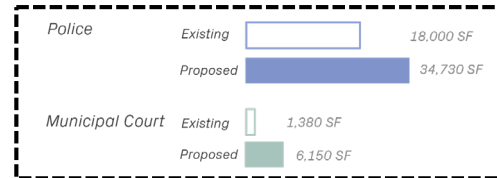
Option 2:

- Test for ideal workplace and departmental distribution moving as few departments as possible
- **Separate Police + Municipal Court programs (per Ferguson Commission Report recommendation)**
- Recommend areas for improvements/upgrades including for accessibility
- Revitalization of historically significant building(s)

Available Buildings Total = 110,510 sf

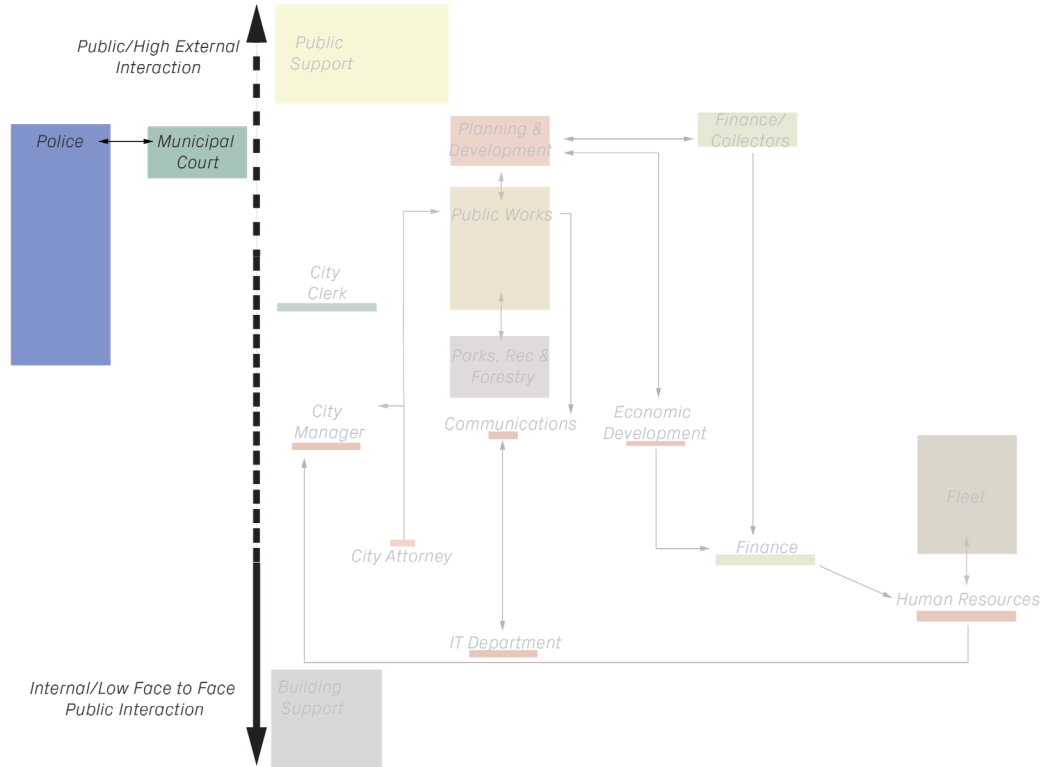


Existing Departments Total = 89,790 sf*
 *includes existing approx 22,000 SF existing police modular facility
 Proposed Departments Total = 101,470 sf



*Police & Municipal Court Totals include Public Support and Building Support sq ft

University City – Department Adjacencies

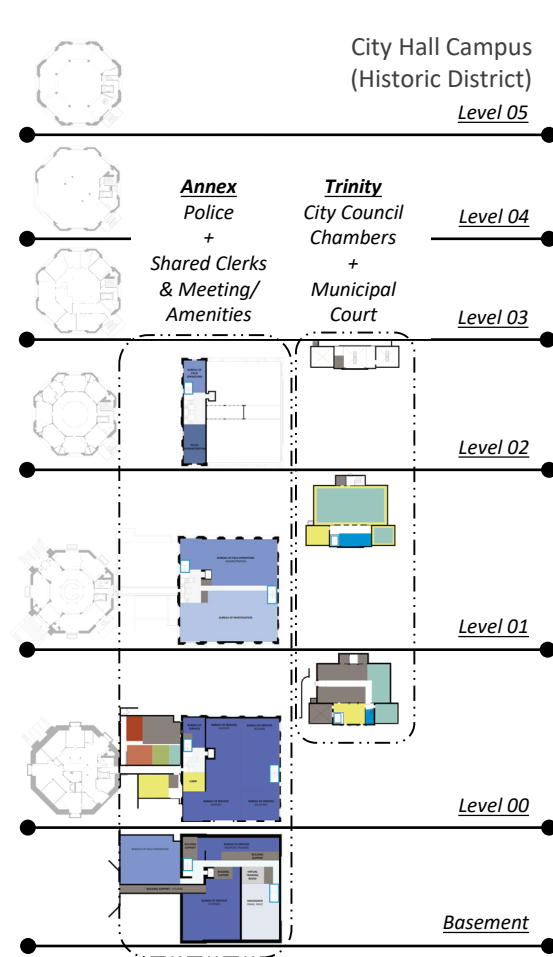
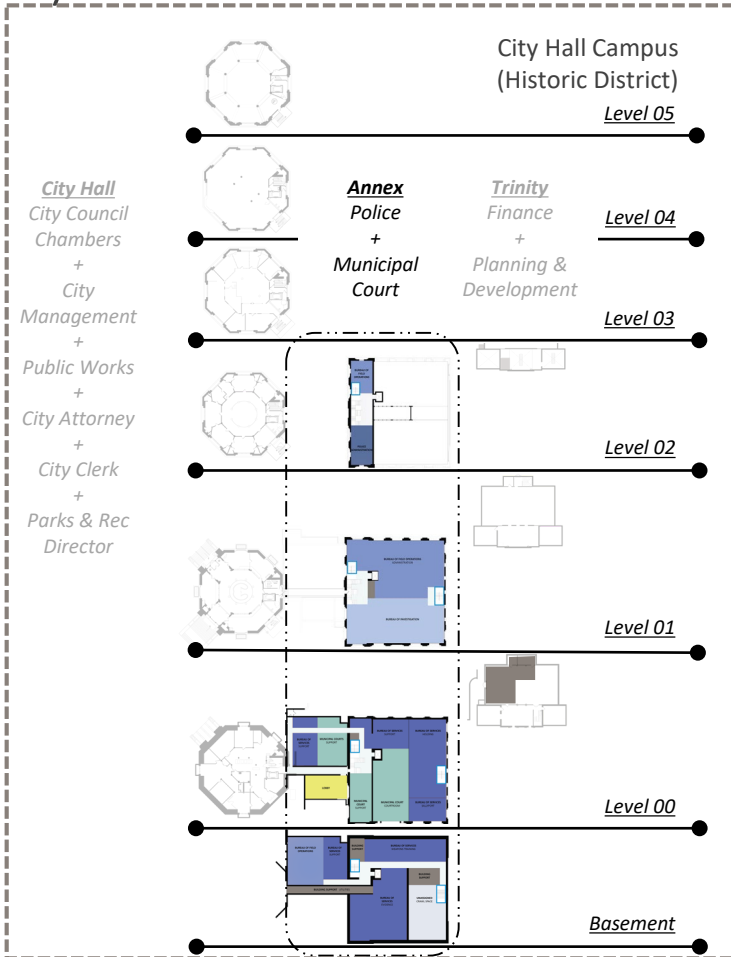


Trivers

Summary

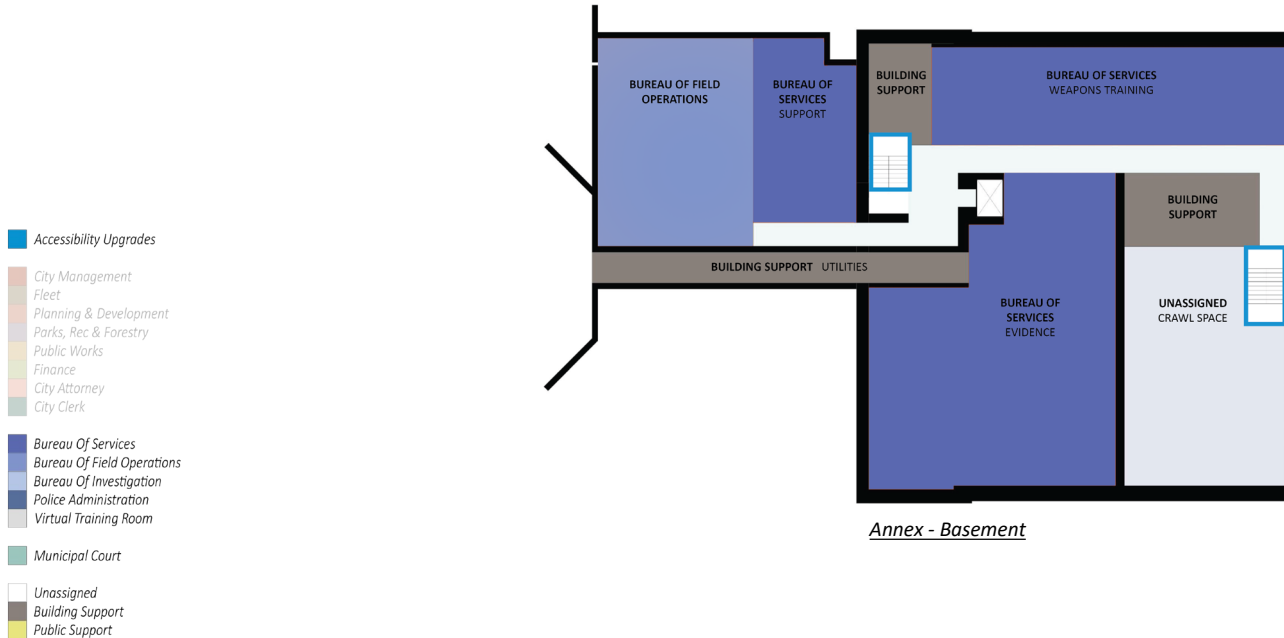
Option 1

Option 2



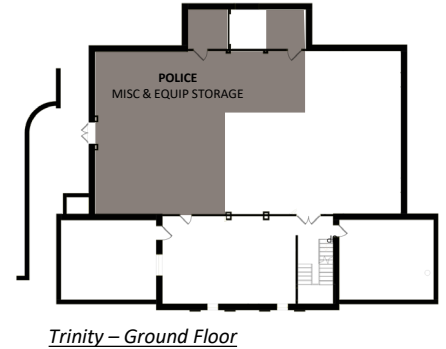
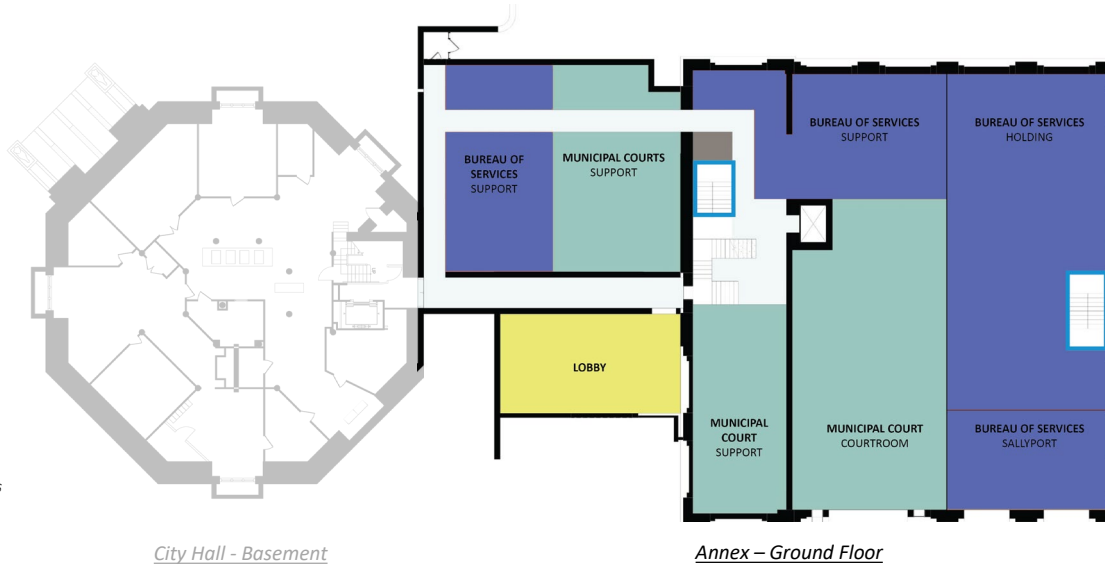
Option 1 – City Hall Campus – basement level

- Police program utilizes the Basement of Annex



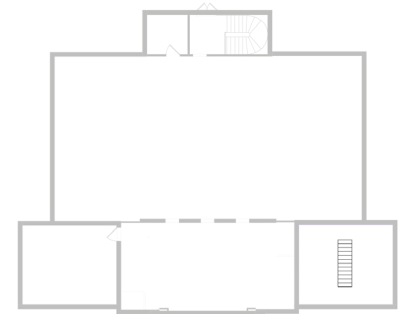
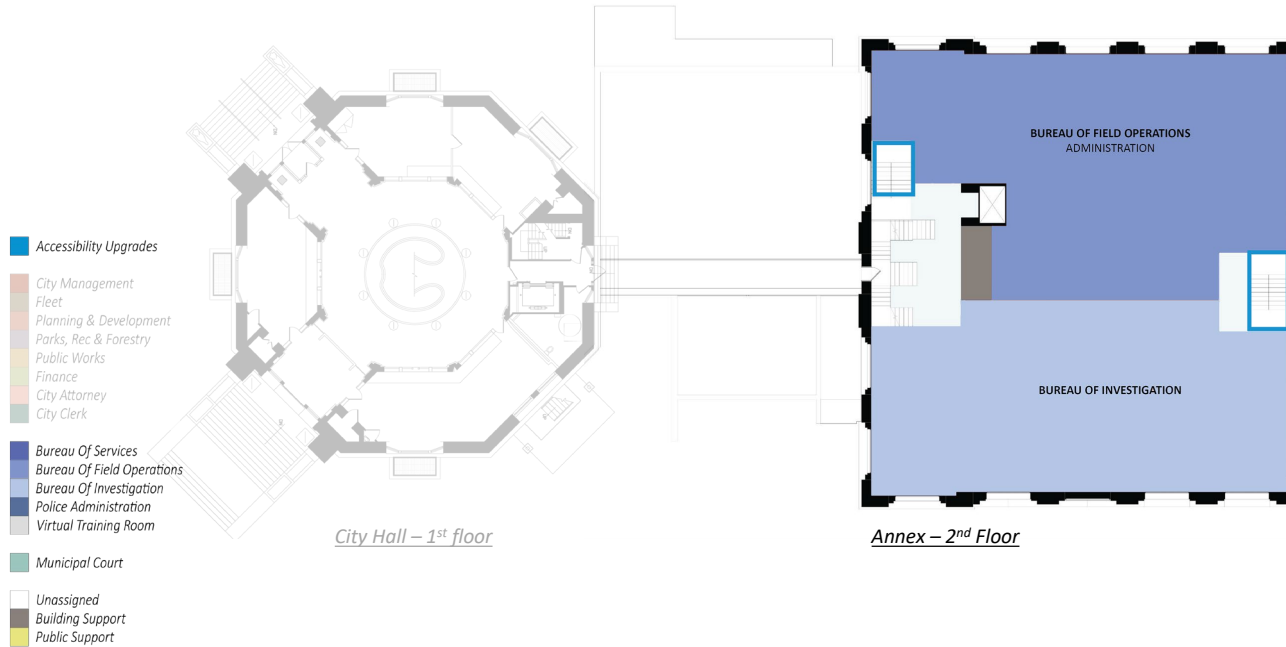
Option 1 – City Hall Campus – level 00

- Police and Courts share Ground Floor of Annex; some Police storage in Trinity



Option 1 – City Hall Campus – level 01

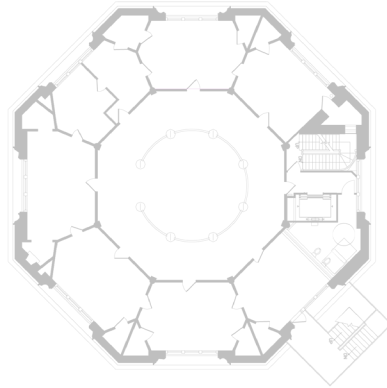
- Police program utilizes the 2nd Floor of Annex



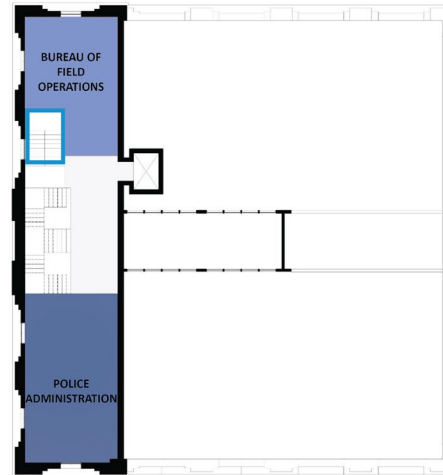
Trinity - 2nd Floor

Option 1 – City Hall Campus – level 02

- Police program utilizes the 3rd Floor of Annex



City Hall – 2nd floor



Annex – 3rd Floor

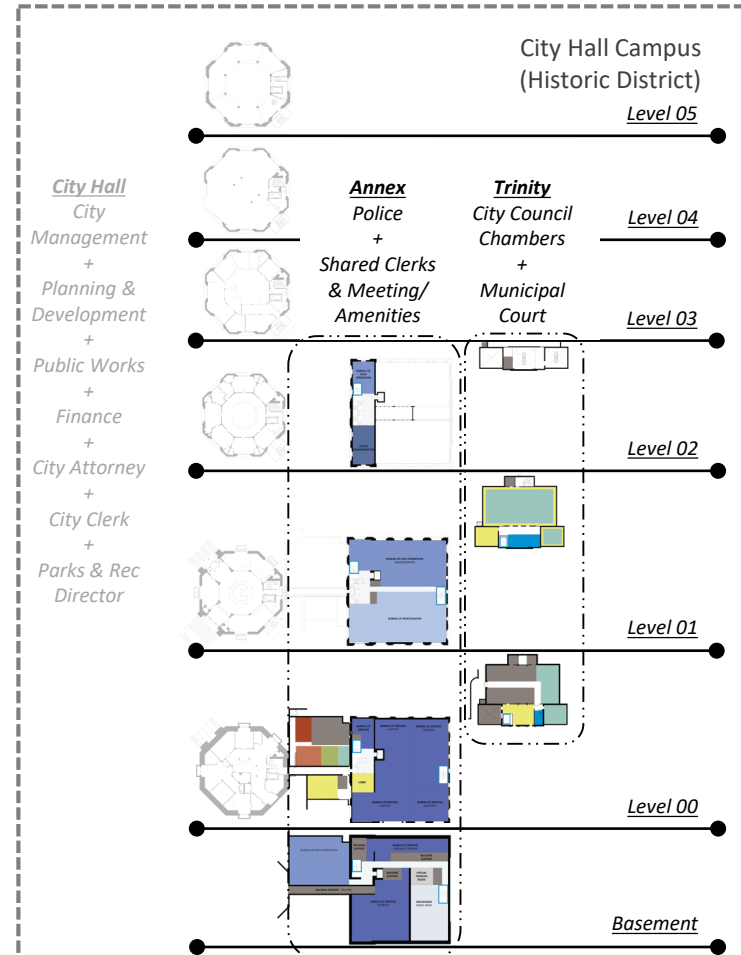
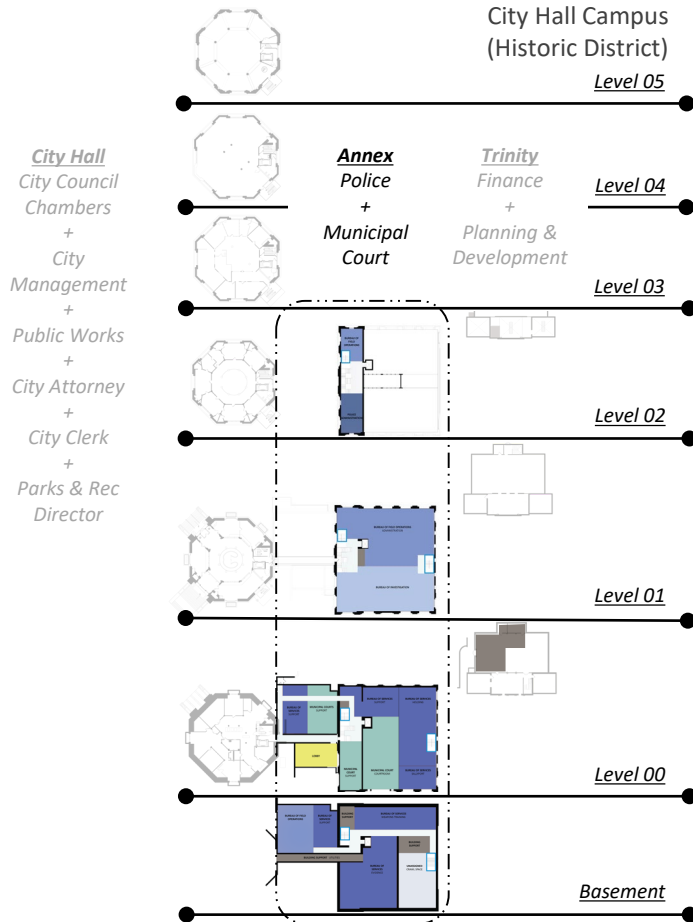


Trinity – Mezzanine

Summary

Option 1

Option 2



Option 2 – City Hall Campus – basement level

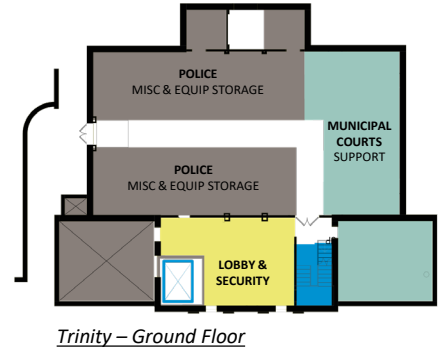
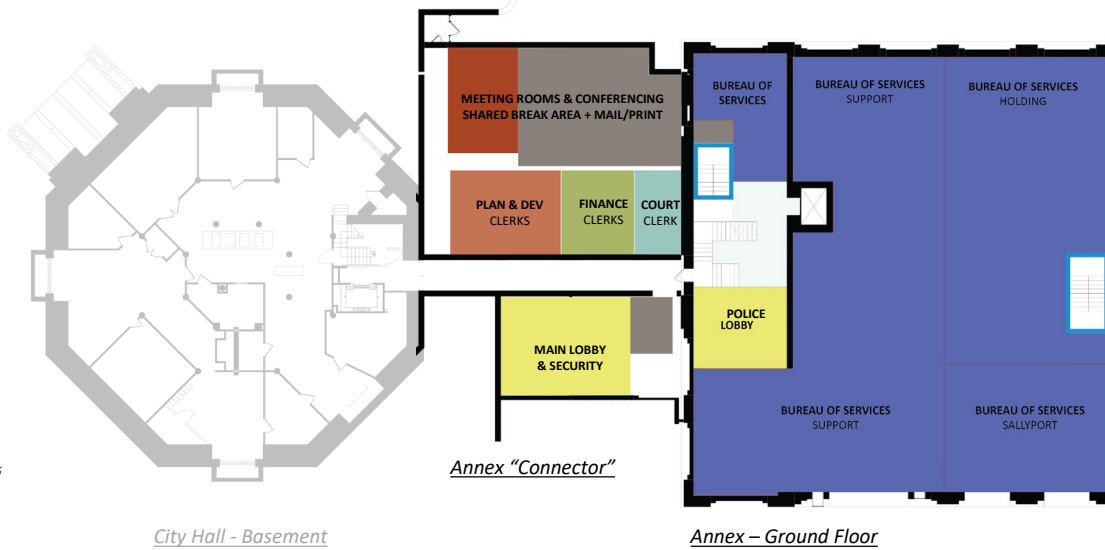
- Police program utilizes the Basement of Annex



Annex - Basement

Option 2 – City Hall Campus – level 00

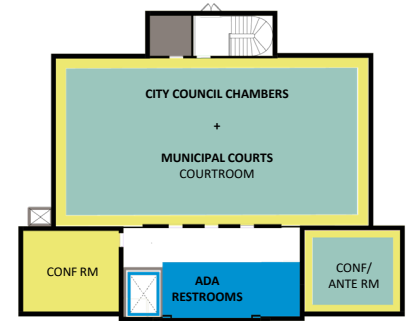
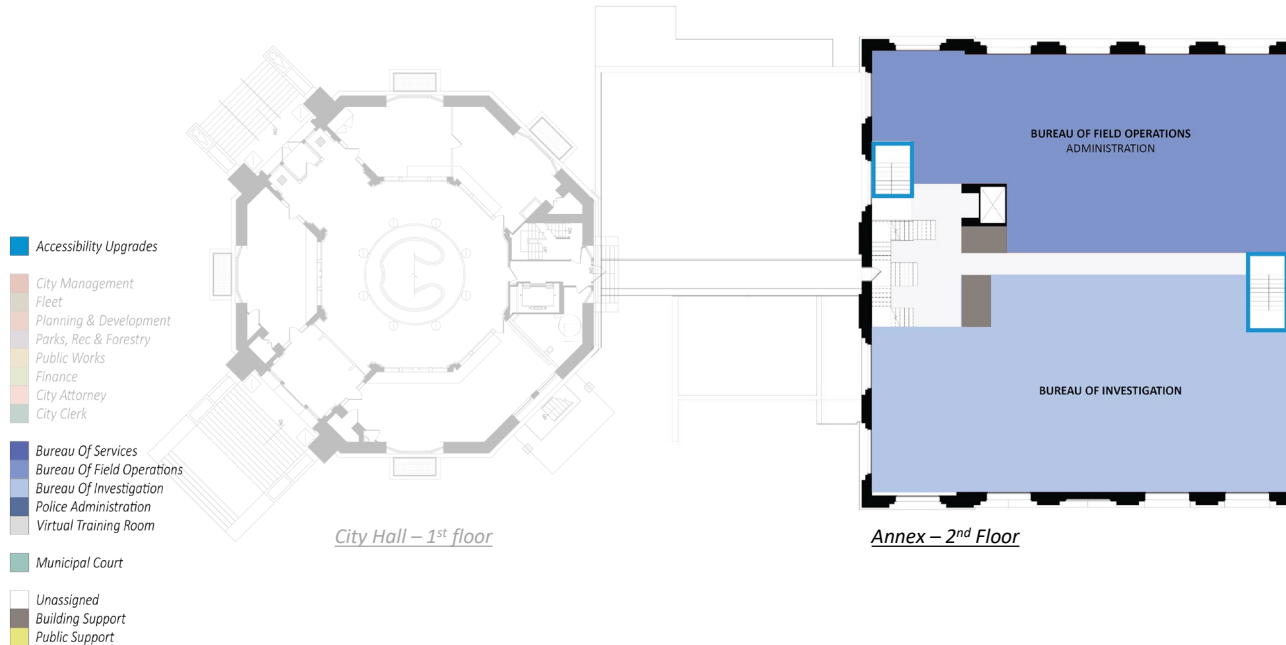
- Police in Annex separate from Courts; some Police storage in Trinity
- Main Security screening entry point and Courts support in ground floor of Trinity
- Connector between City Hall and Annex is shared “one-stop” and campus meeting/amenities zone; central secure entry & new front door to campus



- Accessibility Upgrades
- City Management
- Fleet
- Planning & Development
- Parks, Rec & Forestry
- Public Works
- Finance
- City Attorney
- City Clerk
- Bureau Of Services
- Bureau Of Field Operations
- Bureau Of Investigation
- Police Administration
- Virtual Training Room
- Municipal Court
- Unassigned
- Building Support
- Public Support

Option 2 – City Hall Campus – level 01

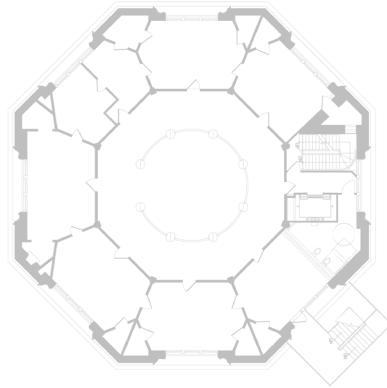
- Police program utilizes the 2nd Floor of Annex
- City Council Chambers & Courtroom share Trinity Reading Room; conferencing and ante rooms adjacent to shared Chambers/Courtroom



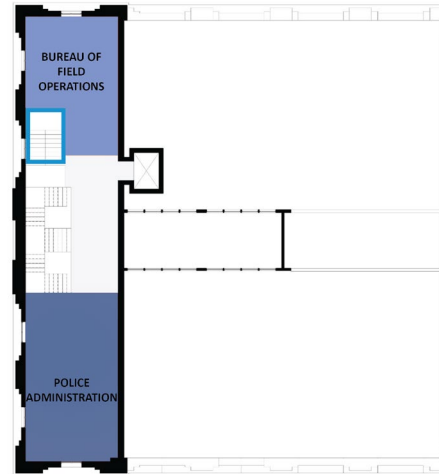
*Trinity –
Interstitial
Stack Space
(down from
second floor)
REMOVE*

Option 2 – City Hall Campus – level 02

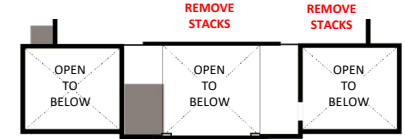
- Police program utilizes the 3rd Floor of Annex
- Stacks removed from Trinity to accommodate program, create vertical space



City Hall – 2nd floor



Annex – 3rd Floor



Trinity – Mezzanine

- Accessibility Upgrades
- City Management
- Fleet
- Planning & Development
- Parks, Rec & Forestry
- Public Works
- Finance
- City Attorney
- City Clerk
- Bureau Of Services
- Bureau Of Field Operations
- Bureau Of Investigation
- Police Administration
- Virtual Training Room
- Municipal Court
- Unassigned
- Building Support
- Public Support