

INTRODUCED BY: Councilmember Steve McMahon

DATE: August 9, 2021

BILL NO. 9443

ORDINANCE NO.: 7162

**AN ORDINANCE APPROVING A FINAL PLAT FOR A MAJOR SUBDIVISION
OF A TRACT OF LAND TO BE KNOWN AS “#801 SWARTHMORE LANE
CONSOLIDATION PLAT”**

WHEREAS, an application was submitted by Fischer & Frichtel, on July 12, 2021 for the approval of a final subdivision plat of a tract of land to be known as 801 Swarthmore Lane; and

WHEREAS, at its meeting on July 28, 2021, the City Plan Commission reviewed the final plat for the major subdivision and determined that the final plat is in substantial compliance with the requirements of the University City Municipal Code and recommended to the City Council approval of the final plat; and

WHEREAS, the final plat for the major subdivision application, including all required documents submitted therewith, is before the City Council for its consideration.

**NOW, THEREFORE, BE IT ORDAINED BY THE COUNCIL OF THE CITY OF
UNIVERSITY CITY, MISSOURI, AS FOLLOWS:**

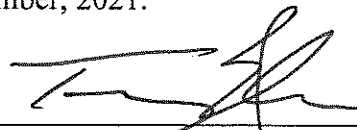
Section 1. Attached, marked “Exhibit A”, and made a part hereof is a final subdivision plat of a tract of land to be known as “#801 Swarthmore Lane Consolidation Plat”: Lots 1, 1A and 6 of Bretagne Subdivision, A subdivision according to the plat thereof recorded in plat book 30 page 80 of the St. Louis County records.

Section 2. It is hereby found and determined that the final plat for the major subdivision is in full compliance with the University City Municipal Code, including Sections 405.380 and 405.390. Accordingly, the final plat for the major subdivision marked “Exhibit A” is hereby approved.

Section 3. The City Clerk is hereby directed to endorse upon the final plat for the major subdivision the approval of the City Council under the hand of the City Clerk and the seal of University City.

Section 4. This ordinance shall take effect and be in force from and after its passage as provided by law.

PASSED and ADOPTED this 13th day of September, 2021.



MAYOR

ATTEST:

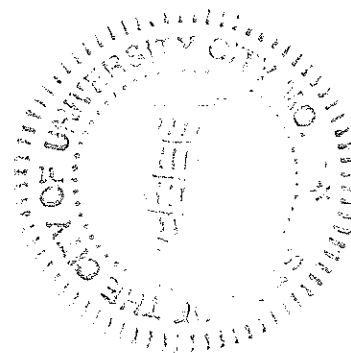


CITY CLERK

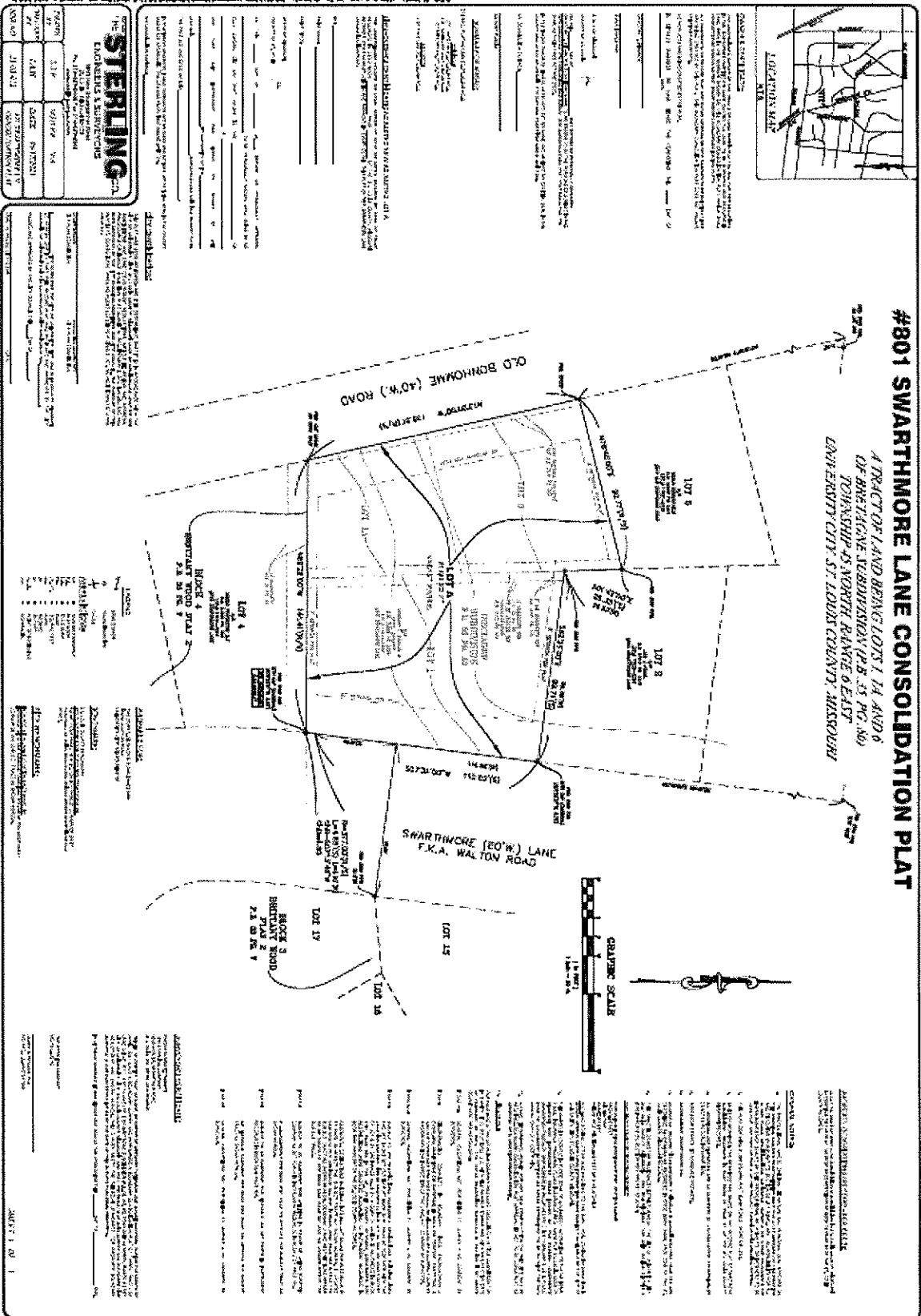
CERTIFIED TO BE CORRECT AS TO FORM:



CITY ATTORNEY

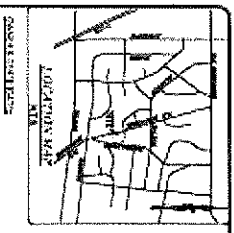


"EXHIBIT A"

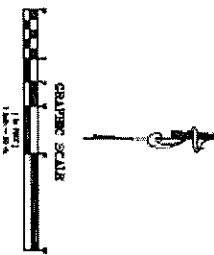


#801 SWARTHMORE LANE CONSOLIDATION PLAT

A TRACT OF LAND BEING LOTS 1, 14 AND 6
OF BRITAGNE SUBDIVISION (P.B. 35 PG. NO.)
JOHNSBURGH 45 NORTH RANGE 6 EAST
LAUREL COUNTY, ST. LOUIS COUNTY, MISSOURI



GENERAL NOTES:
1. THIS PLAT IS A CONSOLIDATION PLAT OF LOTS 1, 14 AND 6 OF BRITAGNE SUBDIVISION (P.B. 35 PG. NO.) JOHNSBURGH 45 NORTH RANGE 6 EAST LAUREL COUNTY, ST. LOUIS COUNTY, MISSOURI.
2. THE TOTAL AREA OF THE TRACT IS 1.25 ACRES.
3. THE TRACT IS BOUND BY SWARTHMORE LANE (F.K.A. WALTON ROAD) TO THE SOUTH, OLD BOHANNÉ ROAD (40' W.) TO THE WEST, AND A 10' WIDE STRIP OF LAND TO THE EAST.
4. THE TRACT IS BOUND BY A 10' WIDE STRIP OF LAND TO THE NORTH.
5. THE TRACT IS BOUND BY A 10' WIDE STRIP OF LAND TO THE EAST.
6. THE TRACT IS BOUND BY A 10' WIDE STRIP OF LAND TO THE EAST.



GENERAL NOTES:
1. THIS PLAT IS A CONSOLIDATION PLAT OF LOTS 1, 14 AND 6 OF BRITAGNE SUBDIVISION (P.B. 35 PG. NO.) JOHNSBURGH 45 NORTH RANGE 6 EAST LAUREL COUNTY, ST. LOUIS COUNTY, MISSOURI.
2. THE TOTAL AREA OF THE TRACT IS 1.25 ACRES.
3. THE TRACT IS BOUND BY SWARTHMORE LANE (F.K.A. WALTON ROAD) TO THE SOUTH, OLD BOHANNÉ ROAD (40' W.) TO THE WEST, AND A 10' WIDE STRIP OF LAND TO THE EAST.
4. THE TRACT IS BOUND BY A 10' WIDE STRIP OF LAND TO THE NORTH.
5. THE TRACT IS BOUND BY A 10' WIDE STRIP OF LAND TO THE EAST.
6. THE TRACT IS BOUND BY A 10' WIDE STRIP OF LAND TO THE EAST.

STERLING
ENGINEERS & ARCHITECTS
No. 1118 S. BROADWAY
ST. LOUIS, MISSOURI 63102
PHONE 435-1111
FAX 435-1112

DATE	11/19/94	NO.	104
BY	DAVE BRUNNEN		
FOR	JOHN J. BRUNNEN		

PLAT OF LOTS 1, 14 AND 6 OF BRITAGNE SUBDIVISION (P.B. 35 PG. NO.) JOHNSBURGH 45 NORTH RANGE 6 EAST LAUREL COUNTY, ST. LOUIS COUNTY, MISSOURI.
THE TOTAL AREA OF THE TRACT IS 1.25 ACRES.
THE TRACT IS BOUND BY SWARTHMORE LANE (F.K.A. WALTON ROAD) TO THE SOUTH, OLD BOHANNÉ ROAD (40' W.) TO THE WEST, AND A 10' WIDE STRIP OF LAND TO THE EAST.
THE TRACT IS BOUND BY A 10' WIDE STRIP OF LAND TO THE NORTH.
THE TRACT IS BOUND BY A 10' WIDE STRIP OF LAND TO THE EAST.

PLAT OF LOTS 1, 14 AND 6 OF BRITAGNE SUBDIVISION (P.B. 35 PG. NO.) JOHNSBURGH 45 NORTH RANGE 6 EAST LAUREL COUNTY, ST. LOUIS COUNTY, MISSOURI.
THE TOTAL AREA OF THE TRACT IS 1.25 ACRES.
THE TRACT IS BOUND BY SWARTHMORE LANE (F.K.A. WALTON ROAD) TO THE SOUTH, OLD BOHANNÉ ROAD (40' W.) TO THE WEST, AND A 10' WIDE STRIP OF LAND TO THE EAST.
THE TRACT IS BOUND BY A 10' WIDE STRIP OF LAND TO THE NORTH.
THE TRACT IS BOUND BY A 10' WIDE STRIP OF LAND TO THE EAST.

PLAT OF LOTS 1, 14 AND 6 OF BRITAGNE SUBDIVISION (P.B. 35 PG. NO.) JOHNSBURGH 45 NORTH RANGE 6 EAST LAUREL COUNTY, ST. LOUIS COUNTY, MISSOURI.
THE TOTAL AREA OF THE TRACT IS 1.25 ACRES.
THE TRACT IS BOUND BY SWARTHMORE LANE (F.K.A. WALTON ROAD) TO THE SOUTH, OLD BOHANNÉ ROAD (40' W.) TO THE WEST, AND A 10' WIDE STRIP OF LAND TO THE EAST.
THE TRACT IS BOUND BY A 10' WIDE STRIP OF LAND TO THE NORTH.
THE TRACT IS BOUND BY A 10' WIDE STRIP OF LAND TO THE EAST.

PLAT OF LOTS 1, 14 AND 6 OF BRITAGNE SUBDIVISION (P.B. 35 PG. NO.) JOHNSBURGH 45 NORTH RANGE 6 EAST LAUREL COUNTY, ST. LOUIS COUNTY, MISSOURI.
THE TOTAL AREA OF THE TRACT IS 1.25 ACRES.
THE TRACT IS BOUND BY SWARTHMORE LANE (F.K.A. WALTON ROAD) TO THE SOUTH, OLD BOHANNÉ ROAD (40' W.) TO THE WEST, AND A 10' WIDE STRIP OF LAND TO THE EAST.
THE TRACT IS BOUND BY A 10' WIDE STRIP OF LAND TO THE NORTH.
THE TRACT IS BOUND BY A 10' WIDE STRIP OF LAND TO THE EAST.

PLAT OF LOTS 1, 14 AND 6 OF BRITAGNE SUBDIVISION (P.B. 35 PG. NO.) JOHNSBURGH 45 NORTH RANGE 6 EAST LAUREL COUNTY, ST. LOUIS COUNTY, MISSOURI.
THE TOTAL AREA OF THE TRACT IS 1.25 ACRES.
THE TRACT IS BOUND BY SWARTHMORE LANE (F.K.A. WALTON ROAD) TO THE SOUTH, OLD BOHANNÉ ROAD (40' W.) TO THE WEST, AND A 10' WIDE STRIP OF LAND TO THE EAST.
THE TRACT IS BOUND BY A 10' WIDE STRIP OF LAND TO THE NORTH.
THE TRACT IS BOUND BY A 10' WIDE STRIP OF LAND TO THE EAST.